

# CAMSO SKS 332

FORMERLY SOLIDEAL GRIPPER



SKID STEER  
LOADERS



## RELIABLE PERFORMANCE AND QUALITY

A solid skid steer tire solution for flat-free, off-road operation. Designed with durability in mind, it also provides excellent cleanout for improved off-road traction.

[camso.co](http://camso.co)

## PERFORMANCE

TIRE LIFE



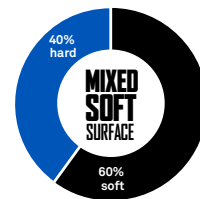
PUNCTURE RESISTANCE



TRACTION



# CAMSO SKS 332



## PREMIUM RUBBER COMPOUNDS

Provides good chunk and tear resistance

## DEEP LUG DESIGN

- Provides good durability and traction in light-duty conditions

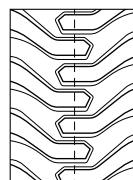
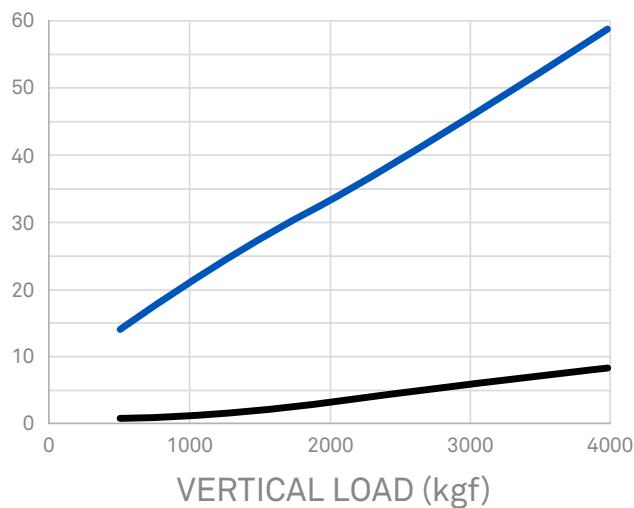


## LOWER LUG-TO-VOID RATIO

- Provides good traction in off-road conditions

TIRE SIZE	PR	RIM SIZE		ACTUAL TIRE DIMENSIONS			LOAD INDEX	SPEED SYMBOL	TRA CODE	INFLATION PRESSURE [bar] [PSI]	MAXIMUM TIRE LOAD [kg] [lb]		
		Recommended	Alternative	O.D. [mm] [in]	O.W. [mm] [in]	O.T.D. [mm] [32nd]					Static	8 km/h 5 mph	16 km/h 10 mph
10-16.5	10	8.25	-	764	275	15.0	129	A2	R-4	4.20	2960	1875	1480
				30.1	10.8	19				60	6550	4150	3250
12-16.5	12	9.75	-	819	318	18.0	140	A2	R-4	4.50	4020	2545	2010
				32.2	12.5	23				64	8850	5600	4450

## 12-16.5 10PR SKS 332



The Camso SKS 332 is a great standard-duty, off-road tire offering a good combination of quality, performance and value.

- VERTICAL DEFLECTION (mm)
- HORIZONTAL DEFLECTION (mm)

AUTHORIZED DISTRIBUTOR:

[camso.co](http://camso.co)

