

MS404

E-4 / G-4 / L-4

The aggressive, self-cleaning deep E4 tread design provides excellent traction in tough, demanding applications.

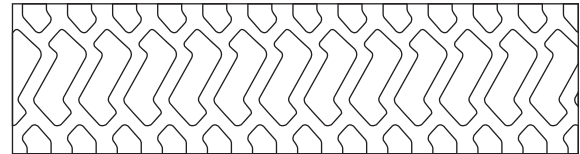
- Wear & Cut resistant tread compound
- Long life self-cleaning deep tread
- Superior traction
- Suitable for loaders and articulated dumpers
- Excellent traction & floatation
- Reduced vibration & improved stability



Applications



Footprint



Size	Load Index & Speed Symbol	Star Rating	Type	Rim	Unit	Tire Dimensions		
						Tread Depth	Section Width	Overall Diameter
23.5R25	185B / 170A8 / 201A2	**	TL	19.50/2.5	in.	60/32	23.7	65.2
					mm	48	603	1655