



# *New Product Release* **SNOWKING**

**"The New King on ICE and SNOW"**



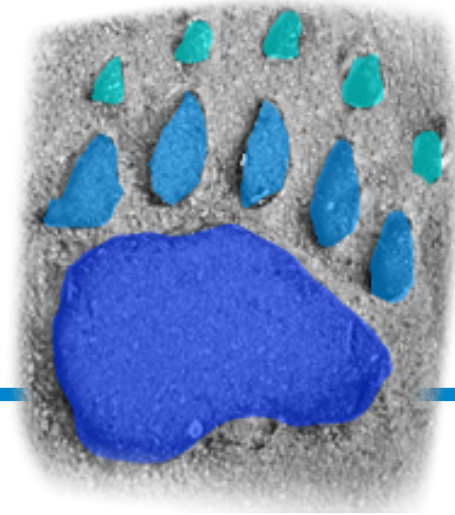
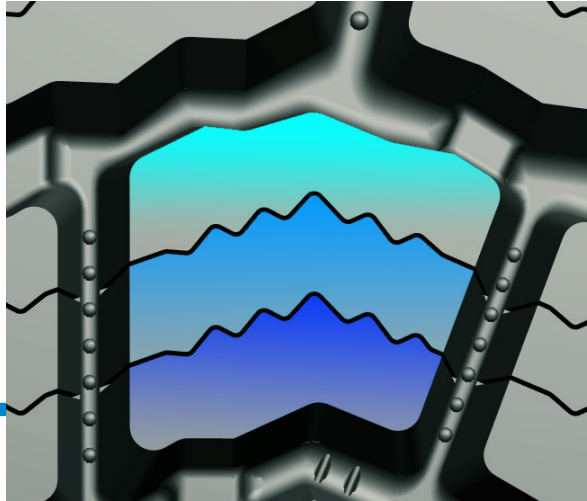
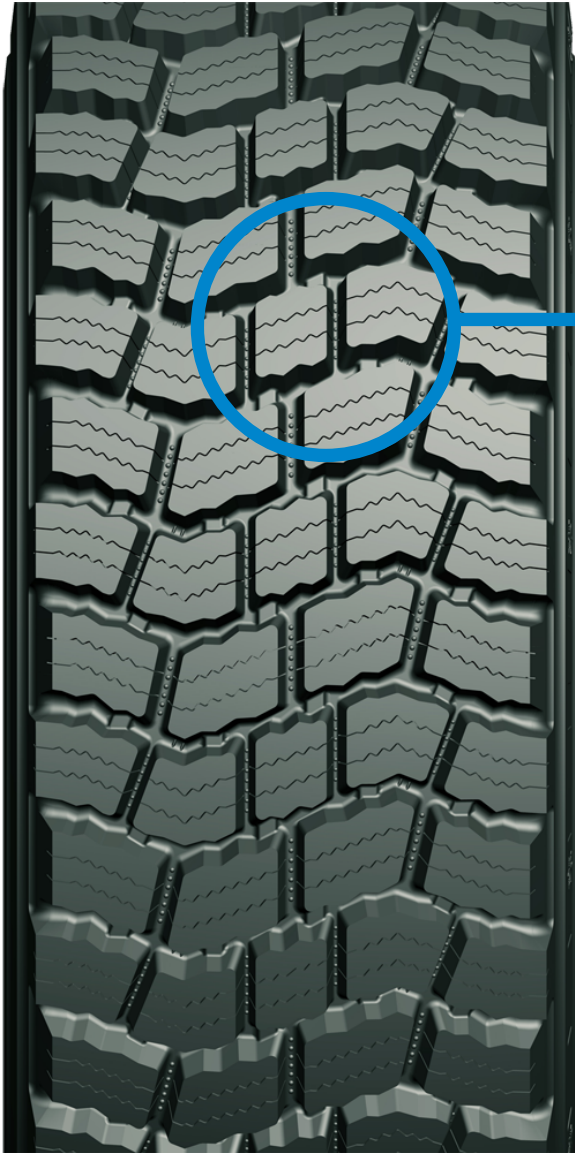
# Why to Choose Snow Tire

- ◆ Better **TRACTION PERFORMANCE**
- ◆ Longer **TIRE LIFE**
- ◆ More **SAFETY**

**Guaranteed:** If the SNOWKING is not better than existing design, Techking will make double compensation for the difference.



# Better Traction Performance — Bionic Technology



## “Polar Bear Paw’ Design

1. Bionic Technology Applied
2. Better Grip Performance

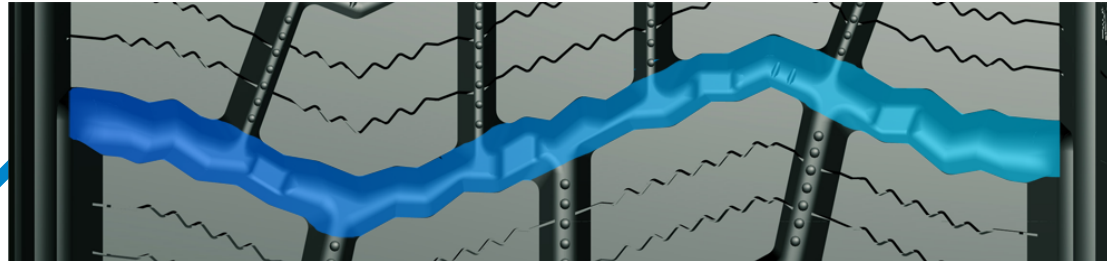


# Better Traction Performance — “Mud & Snow BUSTER”



## ‘3D Sipe’ Design

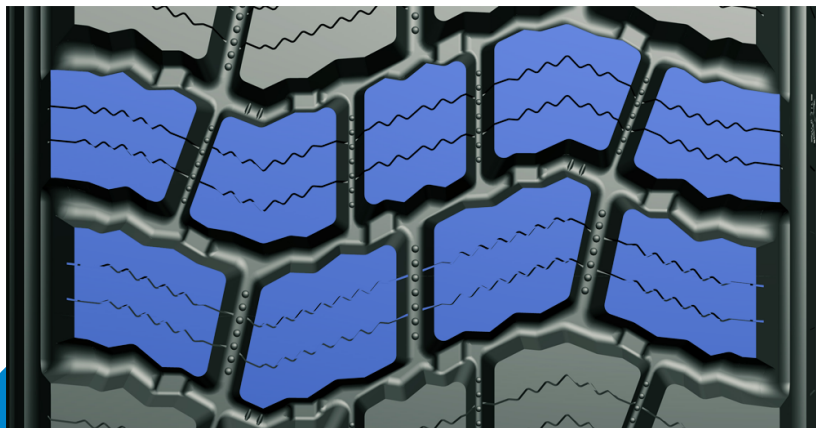
1. Reducing the rolling resistance
2. Decreasing irregular wearing
3. Stone & Snow ejecting on sipe



## ‘Blizzard Line’ Design

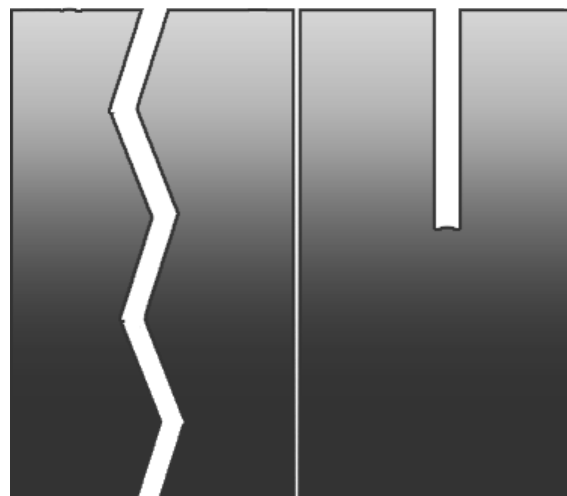
Better self-cleaning for **SNOW & MUD**

# Longer Tire Life — Bigger Pattern Block



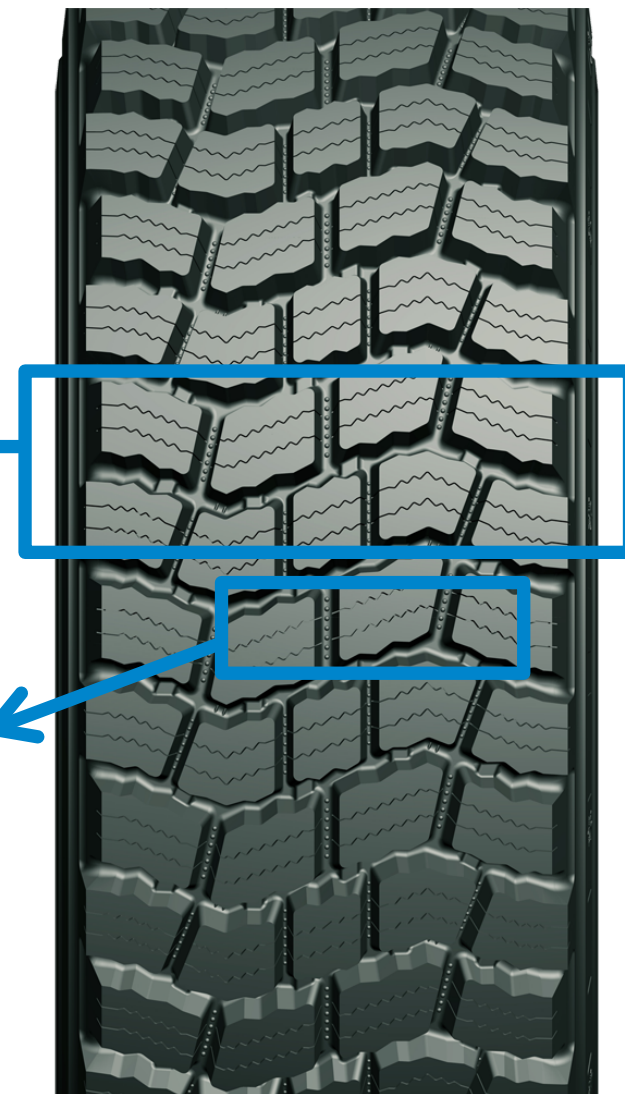
## Bigger Pattern Block

1. More stable than existing version
2. Applied in mud and snow

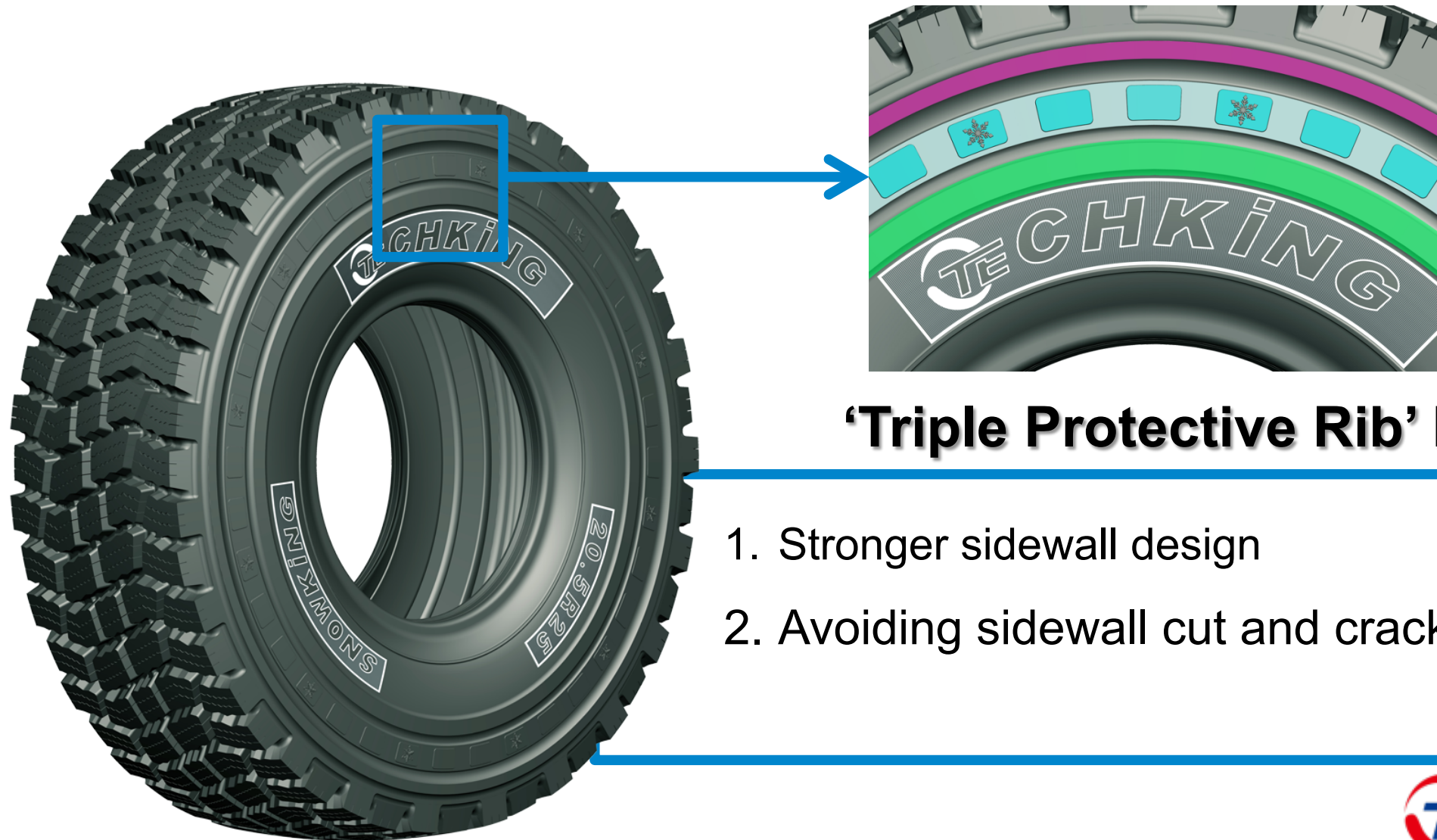


SNOWKING ETSNOW

Longer life



# Longer Tire Life — ‘Triple Protective Rib’



## ‘Triple Protective Rib’ Design

1. Stronger sidewall design
2. Avoiding sidewall cut and crack



# SNOWKING Technical Data



- Bionic Technology
- Mud & Snow Buster
- Longer Tire Life

## SNOWKING



Loaders、Graders& Earthmovers

SIZE	Tread Depth	Available
17.5R25	28mm	August,25
20.5R25	31mm	September,5
23.5R25	34mm	September,20





## Inflation Pressure Tables for Techking SNOWKING

Ambient Temperature	Normal Temperature	- 20°C	Under - 20°C*
Pressure Changing	Specific pressure refer to the Techking OTR Data Book	+4%	+6%

\* When under - 20°C, the pressure will increase 2% each time the temperature decrease 10°C.





# Let's Grow Together!

Passionate, Persistent, Positive, Proactive