



ASSALI & SEMIASSI
AXLES & STUB AXLES

CATALOGO RICAMBI - Spare parts catalogue



ASSALI & SEMIASSI
AXLES & STUB AXLES



TVZ è una società nuova, giovane e dinamica, ma il suo team vanta una lunga esperienza nel settore degli assi e dei gruppi sospensione per le macchine agricole, un'esperienza maturata precedentemente in TI.VI. e TZ. TVZ è nata dalla fusione di queste due aziende.

Nel 2006 nasce TVZ, un'azienda di media dimensione, che pur mantenendo una indiscussa flessibilità e disponibilità si presenta ai costruttori nel settore macchine agricole, macchine edili e movimento terra con una gamma di prodotti rinnovata e adeguata alle esigenze in evoluzione: una solida base per una crescita rapida nel futuro. Le sinergie, le diverse esperienze e le comuni strategie scaturite da questa fusione consentono a TVZ di offrire servizio, qualità e condizioni al top delle aspettative alla propria clientela e di espandere il proprio orizzonte operativo.

TVZ is a new, young and dynamic company; however, its team has extensive experience in the industrial sector of axles and suspension units for agricultural machinery, experience gained previously in TI.VI. and TZ. TVZ was born from the merger of these two companies.

In the year 2006 TVZ was founded, a middle size company that while maintaining an unquestionable flexibility and availability, introduced itself to manufacturers in the agricultural machinery, building machine and earth movement sector with a range of updated products capable of satisfying ever-evolving requirements: a solid base for rapid growth in the future. The synergy, variety of experience gained and the common strategies resulting from this merger, have enabled TVZ to offer service, quality and terms that can satisfy the highest expectations of its customers and allow the expansion of its own operative field.



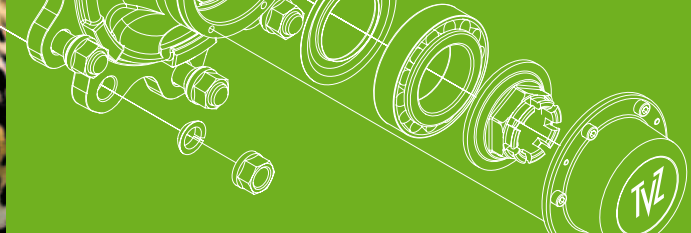


L'ORIGINALE FA LA DIFFERENZA

Altra caratteristica fondamentale per un buon assale è la capacità di ridurre al minimo i fermi macchina.

Anche nel caso che dobbiate vendere la vostra macchina, questa sarà sempre competitiva sul mercato.

COME USARE IL CATALOGO



Presentation of the spare parts catalog

To make the maintenance of our products easier, TVZ is glad to offer you our catalogue of spare parts. You can easily find all the components that you need to maintain all our products at the best efficiency.

THE ORIGINAL MAKES THE DIFFERENCE

Safety is the main feature to define the quality of an axle. For this reason we recommend you to use only TVZ original spare parts for the maintenance of your axles.

Another very important feature for an axle is the capacity to reduce the stop of the machine.

Everyday the agricultural machines become heavier and they move a lot on the road to cover distances that some years ago were not possible even to think. You can easily understand how important it is to have quality axles, always on top of their performance.

TVZ put on hand of its customers all the experience for the quality components, if you know the code of your axle, then it will be easy to identify the component you were looking for.

If you cannot read the plate properly or you cannot identify your axle, please take contact with our technicians. They will help you to identify the original TVZ spare parts.

Only if you use original spare parts your vehicle will give also in the long time term the best efficiency, In case you have to sell your machine, it will be always competitive on the market.

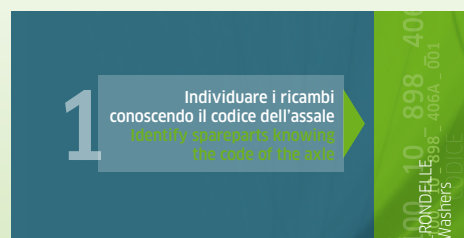
Each product meets all the requirements in terms of quality, reliability and safety.

Attention: maintenace of TVZ axles must be done by qualified people only.

TVZ declines every responsability for any mistake and reserves the right to modify this catalogue at any time.

HOW TO USE THE CATALOGUE

TVZ spare parts catalogue has to be used as follows:



There is a first part, with which is possible to identify all the components, if you have the code of the axle.

This is possible thanks to the way in which the code is built. This is explained on page 6, if it is known the attachment, the hub used and the brake, then it is possible to identify the spare parts needed.



There is a second part, in which it is possible to identify the needed component only by measuring the sample and not knowing the code of the product.

In this section you will find some chapters in which some similar components are grouped. For each spare parts there is a technical drawing with all the data to recognize it. Referring to the drawings there are tables in which you can find all the versions of that part.



ASSALI & SEMIASSE
AXLES & STUB AXLES

Come identificare un assale

How identify an axle

Ogni prodotto TVZ può essere dotato, su richiesta, della targhetta di riconoscimento sulla quale potete trovare il codice dell'assale.

Each product of TVZ can have, on demand, the identification plate. On the plate you can find the following infos

Il codice che identifica i prodotti TVZ ha la seguente struttura.

The code that identifies our products is create as follows.

Esempio:

Example:

A _ 100 _ 10 _ 898 _ 406A _ 001

Tipo di prodotto:

A Assale - S Semiasse - ecc...

A= Type of product:

A Axle - S Stub axle - etc.

Lato del quadro della billetta

Type of square of the beam

N° di colonnette

Number of studs

Tipologia del mozzo

Type of hub

Freno

Brake

Progressivo

Progressive number

Il terzo campo si riferisce al numero di colonnette, noto il quale, sapendo se l'assale/semiasse monta o meno il freno e se l'attacco è singolo o gemellato, dalle tabelle da pagina 7 a pagina 11 si possono identificare i codici di colonnette, dadi e rondelle.

Il quarto campo identifica la famiglia del mozzo, noto questo campo si possono identificare i componenti interni al mozzo mediante le tabelle da pagina 13 a pagina 17: tenute, cuscinetti, nilos, dadi ad intagli, spine elastiche e calotte.

Il quinto campo se diverso da 000 identifica il tipo di freno montato sull'assale/semiasse, tramite le tabelle da pagina 19 a pagina 21 potete individuare le masse frenanti, gli alberi a camma e le leve freno adatte.

The 3rd field refers to the number of studs. Once you know that, together with other infos such as if the axle/stub axle is braked or unbraked, if the fitting is a single or twin, please see page 7-11 you can identify the codes for studs, nuts and washers.

The 4th field identifies the family of the hub. Once you know that, you can identify the internal components with the table that you can find on page: 13-17 sealings, bearings, nilos, crown nut, elastic pin and caps.

If the fifth field is different from 000, then the numbers and letters identify the type of brake that you can see on page 19-21. You can identify brakes, camshafts, and the brake levers.

1

Individuare i ricambi
conoscendo il codice dell'assale
**Identify spare parts knowing
the code of the axle**

CODE 100 10 898 406
A 100 10 898 406A - 001
Terzo campo del codice: COLONNETTE_DADI_RONDELLE
Third field of the code: Studs_nuts_Washers
CODICE



Esplso per colonnine dadi rondelle versione senza freno e monoblocco

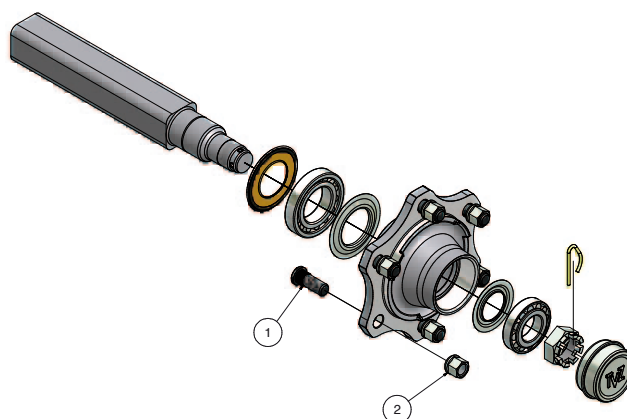
Spare parts for studs nuts washers version without brake and solid drum

FAMIGLIA Family	ATTACCO Fitting	GEMELLATURA Twin	COLONNETTA Stud	RONDELLA GEMELLATA Twin washer	RONDELLA LIMES Limes washer	DADO Nut	FIGURA Picture (Fig.)
	(fori = holes)		(1)	(4)	(3)	(2)	
412	04 fori 58x98 M12x1,5	NO	S57112B1			S57312B1	1
412	04 fori 62x95 M12x1,5	NO	S57112B1			S57312B1	1
431	04 fori 58x98 M12x1,5	NO	S57112B1			S57312B1	1
431	04 fori 62x95 M12x1,5	NO	S57112B1			S57312B1	1
440	04 fori 58x98 M12x1,5	NO	S57112B1			S57312B1	1
440	04 fori 62x95 M12x1,5	NO	S57112B1			S57312B1	1
520	05 fori 94x140 M16x1,5	NO	S57116B1			S57316B1	1
530	05 fori 94x140 M16x1,5	NO	S57116B1			S57316B1	1
535	05 fori 94x140 M16x1,5	NO	S57116B1			S57316B1	1
540	05 fori 94x140 M16x1,5	NO	S57116B1			S57318B4	1
540	06 fori 160x205 M18x1,5	NO	S57118B1			S57318B4	1
540	06 fori 160x205 M18x1,5	SI - YES	S57118B3	S574182	S574181	S57318B1	3
543	05 fori 94x140 M16x1,5	NO	S57116B1			S57316B1	1
543	06 fori 160x205 M18x1,5	NO	S57118B1			S57318B4	1
543	06 fori 160x205 M18x1,5	SI - YES	S57118B3	S574182	S574181	S57318B1	3
630	06 fori 160x205 M18x1,5	NO	S57118B1			S57318B4	1
630	06 fori 160x205 M18x1,5	SI - YES	S57118B3	S574182	S574181	S57318B1	3
633	06 fori 160x205 M18x1,5	NO	S57118B1			S57318B4	1
633	06 fori 160x205 M18x1,5	SI - YES	S57118B3	S574182	S574181	S57318B1	3
640	06 fori 160x205 M18x1,5	NO	S57118B1			S57318B4	1
640	06 fori 160x205 M18x1,5	SI - YES	S57118B3	S574182	S574181	S57318B1	3
641	06 fori 160x205 M18x1,5	NO	S57118B1			S57318B4	1
641	06 fori 160x205 M18x1,5	SI - YES	S57118B3	S574182	S574181	S57318B1	3
645	06 fori 160x205 M18x1,5	NO	S57118B1			S57318B4	1
645	06 fori 160x205 M18x1,5	SI - YES	S57118B3	S574182	S574181	S57318B1	3
661	06 fori 160x205 M18x1,5	NO	S57118B1			S57318B4	1
661	06 fori 160x205 M18x1,5	SI - YES	S57118B3	S574182	S574181	S57318B1	3
661	08 fori 220x275 M18x1,5	NO	S57118B1			S57318B4	1
661	08 fori 220x275 M18x1,5	SI - YES	S57118B3	S574182	S574181	S57318B1	3
668	06 fori 160x205 M18x1,5	NO	S57118B1			S57318B4	1
668	06 fori 160x205 M18x1,5	SI - YES	S57118B3	S574182	S574181	S57318B1	3
668	08 fori 220x275 M18x1,5	NO	S57118B1			S57318B4	1
668	08 fori 220x275 M18x1,5	SI - YES	S57118B3	S574182	S574181	S57318B1	3
671	06 fori 160x205 M18x1,5	NO	S57118B1			S57318B4	1
671	06 fori 160x205 M18x1,5	SI - YES	S57118B3	S574182	S574181	S57318B1	3
671	08 fori 220x275 M18x1,5	NO	S57118B1			S57318B4	1
671	08 fori 220x275 M18x1,5	SI - YES	S57118B3	S574182	S574181	S57318B1	3
880	08 fori 220x275 M20x1,5	NO	S57120B1		S574201	S57320B1	2
880	08 fori 220x275 M20x1,5	SI - YES	S57120B2	S574202	S574201	S57320B1	3
880	10 fori 280x335 M22x1,5	NO	S57122B2		S574221	S57322B1	2
880	10 fori 280x335 M22x1,5	SI - YES	S57122B1	S574222	S574221	S57322B1	3
898	08 fori 220x275 M20x1,5	NO	S57120B1		S574201	S57320B1	2
898	08 fori 220x275 M20x1,5	SI - YES	S57120B2	S574202	S574201	S57320B1	3
898	10 fori 280x335 M22x1,5	NO	S57122B2		S574221	S57322B1	2
898	10 fori 280x335 M22x1,5	SI - YES	S57122B1	S574222	S574221	S57322B1	3
991	10 fori 280x335 M22x1,5	NO	S57122B2		S574221	S57322B1	2
991	10 fori 280x335 M22x1,5	SI - YES	S57122B1	S574222	S574221	S57322B1	3

3° campo del codice - 3th field of the code.

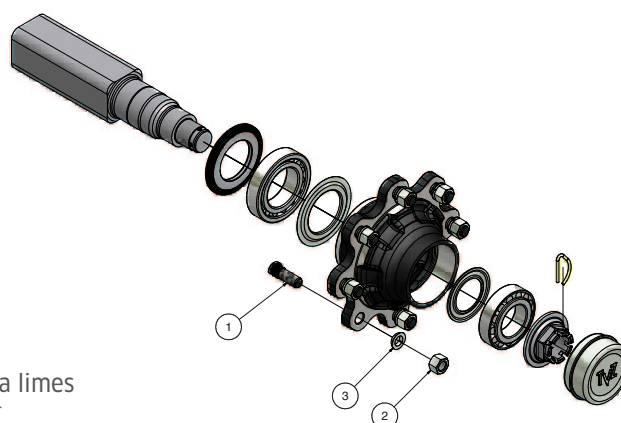


Fig 1



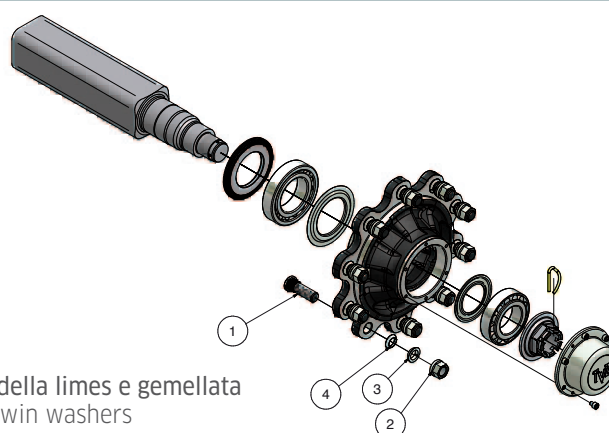
Ruota singola - Dado sferico
Single wheel - Spherical nut

Fig 2

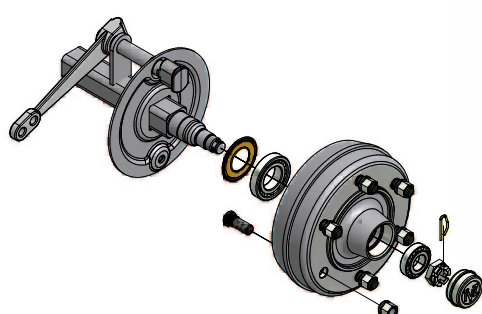


Ruota singola - Dado piano + rondella limes
Single wheel - Flat nut + lime washer

Fig 3



Ruota gemellata - Dado piano + rondella limes e gemellata
Single wheel - Flat nut + limes and twin washers



I codici di tabella rimangono validi anche in caso di monoblocco
The of the table remain the same as in case of solid drum

Esplso per colonnine dadi rondelle versione con freno combinato

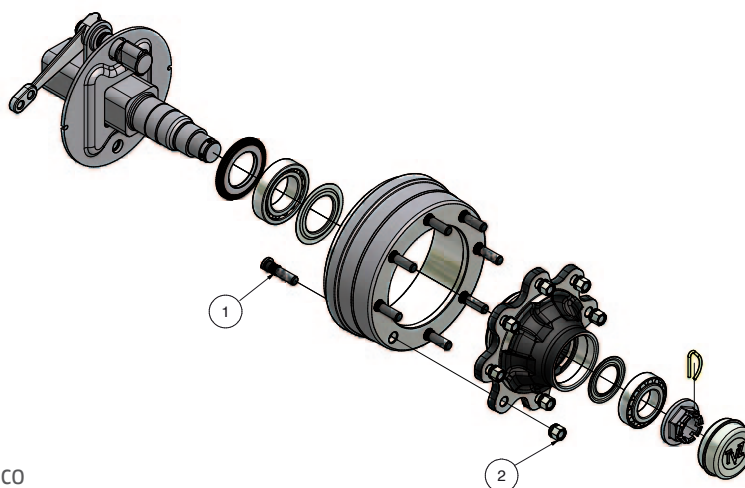
Spare parts for studs nuts washers in case of combined drum

FAMIGLIA Family	ATTACCO Fitting	GEMELLATURA Twin	COLONNETTA Stud	RONDELLA GEMELLATA Twin washer	RONDELLA LIMES Limes washer	DADO Nut	FIGURA picture (Fig.)
	(fori = holes)		(1)	(4)	(3)	(2)	
540	06 fori 160x205 M18x1,5	NO	S57118B4			S57318B4	1
540	06 fori 160x205 M18x1,5	SI - YES	S57118B5	S574182	S574181	S57318B1	3
543	06 fori 160x205 M18x1,5	NO	S57118B4			S57318B4	1
543	06 fori 160x205 M18x1,5	SI - YES	S57118B5	S574182	S574181	S57318B1	3
630	06 fori 160x205 M18x1,5	NO	S57118B4			S57318B4	1
630	06 fori 160x205 M18x1,5	SI - YES	S57118B5	S574182	S574181	S57318B1	3
633	06 fori 160x205 M18x1,5	NO	S57118B4			S57318B4	1
633	06 fori 160x205 M18x1,5	SI - YES	S57118B5	S574182	S574181	S57318B1	3
640	06 fori 160x205 M18x1,5	NO	S57118B4			S57318B4	1
640	06 fori 160x205 M18x1,5	SI - YES	S57118B5	S574182	S574181	S57318B1	3
641	06 fori 160x205 M18x1,5	NO	S57118B4			S57318B4	1
641	06 fori 160x205 M18x1,5	SI - YES	S57118B5	S574182	S574181	S57318B1	3
645	06 fori 160x205 M18x1,5	NO	S57118B4			S57318B4	1
645	06 fori 160x205 M18x1,5	SI - YES	S57118B5	S574182	S574181	S57318B1	3
661	06 fori 160x205 M18x1,5	NO	S57118B4			S57318B4	1
661	06 fori 160x205 M18x1,5	SI - YES	S57118B5	S574182	S574181	S57318B1	3
661	08 fori 220x275 M18x1,5	NO	S57118B4			S57318B4	1
661	08 fori 220x275 M18x1,5	SI - YES	S57118B5	S574182	S574181	S57318B1	3
668	06 fori 160x205 M18x1,5	NO	S57118B4			S57318B4	1
668	06 fori 160x205 M18x1,5	SI - YES	S57118B5	S574182	S574181	S57318B1	3
668	08 fori 220x275 M18x1,5	NO	S57118B4			S57318B4	1
668	08 fori 220x275 M18x1,5	SI - YES	S57118B5	S574182	S574181	S57318B1	3
671	06 fori 160x205 M18x1,5	NO	S57118B4			S57318B4	1
671	06 fori 160x205 M18x1,5	SI - YES	S57118B5	S574182	S574181	S57318B1	3
671	08 fori 220x275 M18x1,5	NO	S57118B4			S57318B4	1
671	08 fori 220x275 M18x1,5	SI - YES	S57118B5	S574182	S574181	S57318B1	3
880	08 fori 220x275 M20x1,5	NO	S57120B4		S574201	S57320B1	2
880	08 fori 220x275 M20x1,5	SI - YES	S57120B5	S574202	S574201	S57320B1	3
880	10 fori 280x335 M22x1,5	NO	S57122B3		S574221	S57322B1	2
880	10 fori 280x335 M22x1,5	SI - YES	S57122B4	S574222	S574221	S57322B1	3
898	08 fori 220x275 M20x1,5	NO	S57120B4		S574201	S57320B1	2
898	08 fori 220x275 M20x1,5	SI - YES	S57120B5	S574202	S574201	S57320B1	3
898	10 fori 280x335 M22x1,5	NO	S57122B3		S574221	S57322B1	2
898	10 fori 280x335 M22x1,5	SI - YES	S57122B4	S574222	S574221	S57322B1	3
991	10 fori 280x335 M22x1,5	NO	S57122B3		S574221	S57322B1	2
991	10 fori 280x335 M22x1,5	SI - YES	S57122B4	S574222	S574221	S57322B1	3

3° campo del codice - 3th field of the code.

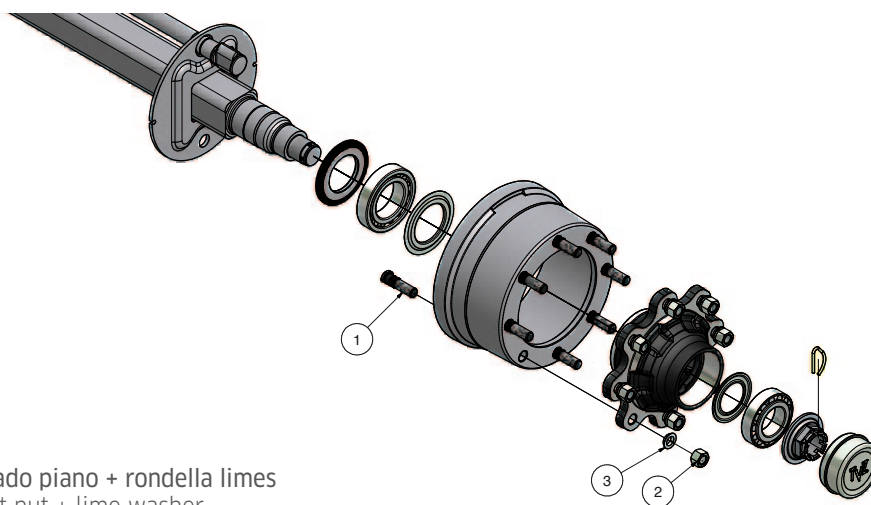


Fig 1



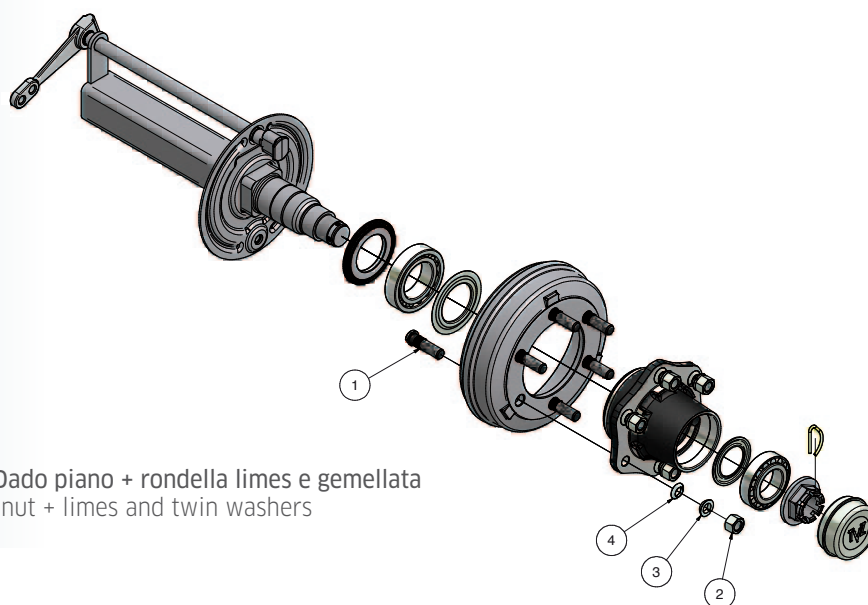
Ruota singola - Dado sferico
Single wheel - Spherical nut

Fig 2



Ruota singola - Dado piano + rondella limes
Single wheel - Flat nut + lime washer

Fig 3



Ruota gemellata - Dado piano + rondella limes e gemellata
Single wheel - Flat nut + limes and twin washers



ASSALI & SEMIASSI
AXLES & STUB AXLES

Rigore e professionalità

Presto e bene è da sempre il nostro motto. La proverbiale sollecitudine di TVZ nella consegna non penalizza in alcun modo l'accuratezza dei controlli, sia del prodotto che del processo produttivo.

Con personale interno o appoggiandosi a laboratori specializzati vengono affrontati tutti gli aspetti della qualità e della sicurezza dei prodotti.

Precision and professionalism

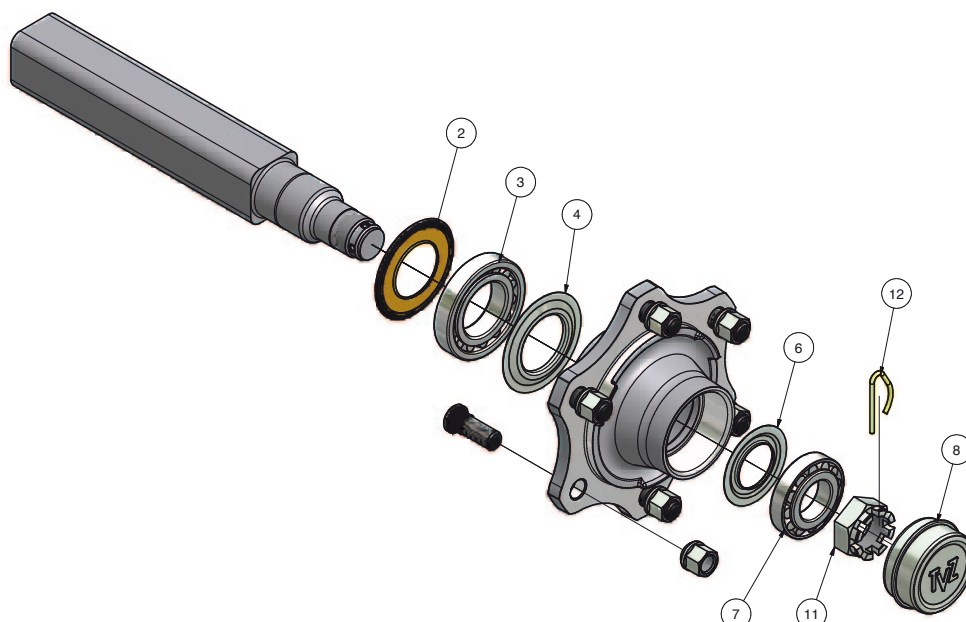
Fast and well has always been our motto. The traditional TVZ promptness in delivery does not in any way affect precision in the checking of products or the production process. With internal personnel or with the help of specialised workshops every single aspect of quality and safety of the products is verified.

CODE 100 10 898 406A 406A_001
Quarto campo del codice: TENUTE_CUSCINETTI_CHIUSURE
Fourth field of the code: Seal_Bearings_Closures CODICE



Per componenti del mozzo tenuta standard calotta a pressione

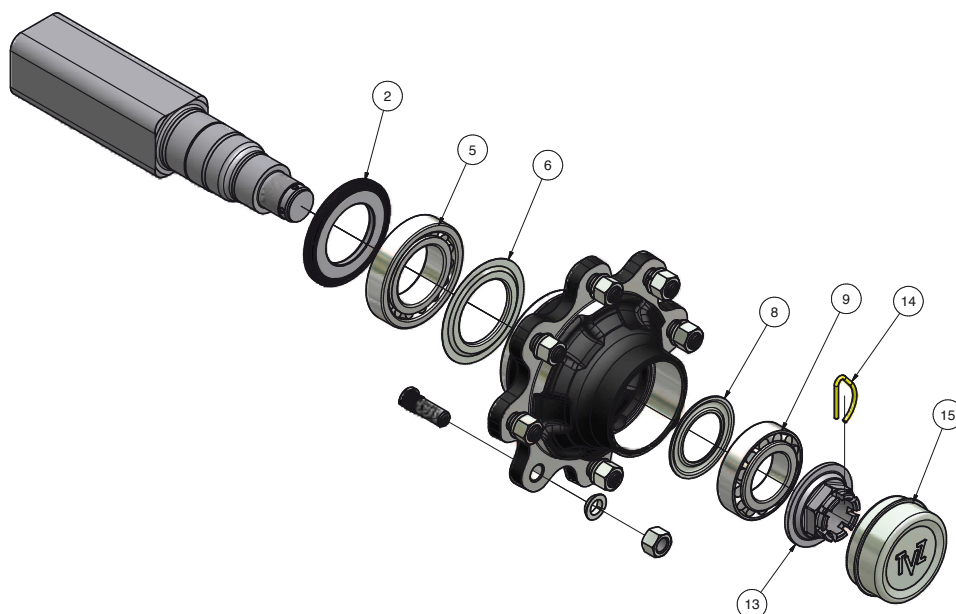
Spare parts for hub components with standard seal and pressure Cap



FAMIGLIA Family	TENUTA Seal	CUSCINETTO INTERNO Internal bearing	NILOS INTERNO Internal nilos	NILOS ESTERNO External nilos	CUSCINETTO ESTERNO Ext. bearing	DADO AD INTAGLI Crown nut	SPINA ELASTICA Elastic pin	CALOTTA Cap
	(2)	(3)	(4)	(6)	(7)	(11)	(12)	(8)
412	S5410521	S5946205-2RS1			S5946204-2RS1	S57918B1		S56104705
420	S5410521	S59130205	S5510521	S5510471	S59130204	S57518B1	S58201	S56104705
431	S5410621	S5946206-2RS1			S5946204-2RS1	S57918B1		S56104705
440	S5410621	S59130206	S5510621	S5510471	S59130204	S57518B1	S58201	S56104705
465	S5410621	S59130206	S5510621		S59130206	S57527B1	S58204	S56106210
520	S5410721	S59130207	S5510721	S5510521	S59130205	S575220B1	S58202	S56105206
530	S5410821	S59130208	S5510801	S5510621	S59130206	S57527B1	S58204	S56106210
540	S5410851	S59130209	S5510851	S5510621	S59130206	S57527B1	S58204	S56106210
630	S5410901	S59130210	S5510901	S5510721	S59130207	S57530B2	S58204	S56107206
640	S5411001	S59130211	S5511001	S5510801	S59130208	S57539B1	S58205	S56108009
645	S5411002	S59132013X	S5510991	S5510801	S59130208	S57539B1	S58205	S56108009
661	S5411201	S59130213	S5511201	S5510901	S59132210	S57539B2	S58205	S56109009

4° campo del codice - 4th field of the code.

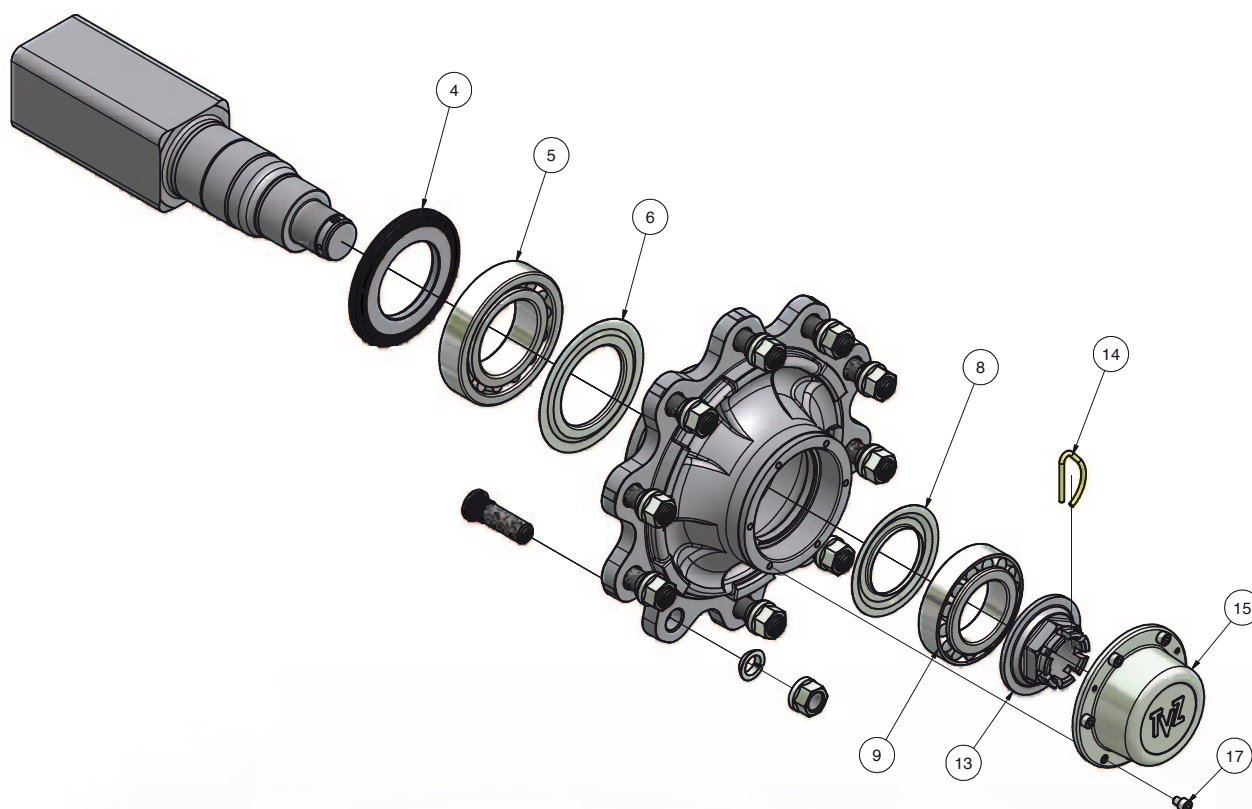
Per componenti del mozzo tenuta industriale calotta a pressione
Spare parts for hub components with industrial seal and pressure Cap



FAMIGLIA Family	TENUTA Seal	CUSCINETTO INTERNO Internal bearing	NILOS INTERNO Internal nilos	NILOS ESTERNO External nilos	CUSCINETTO ESTERNO Ext. bearing	DADO AD INTAGLI Crown nut	SPINA ELASTICA Elastic pin	CALOTTA Cap
	(2)	(5)	(6)	(8)	(9)	(13)	(14)	(15)
535	S5430801	S59130208	S5510801	S5510621	S59130206	S57527B1	S58204	S56106210
543	S5420851	S59130209	S5510851	S5510621	S59130206	S57527B1	S58204	S56106210
633	S5420901	S59130210	S5510901	S5510721	S59130207	S57530B2	S58204	S56107206
641	S5441001	S59130211	S5511001	S5510801	S59130208	S57539B1	S58205	S56108009
668	S5421251	S59132214	S5511251	S5530891	S59132211	S57548B5	S58209	S56110001
671 / 675	S5441301	S59132215	S5511301	S5530991	S59132212	S57548B5	S58209	S56111009

→ 4° campo del codice - 4th field of the code.

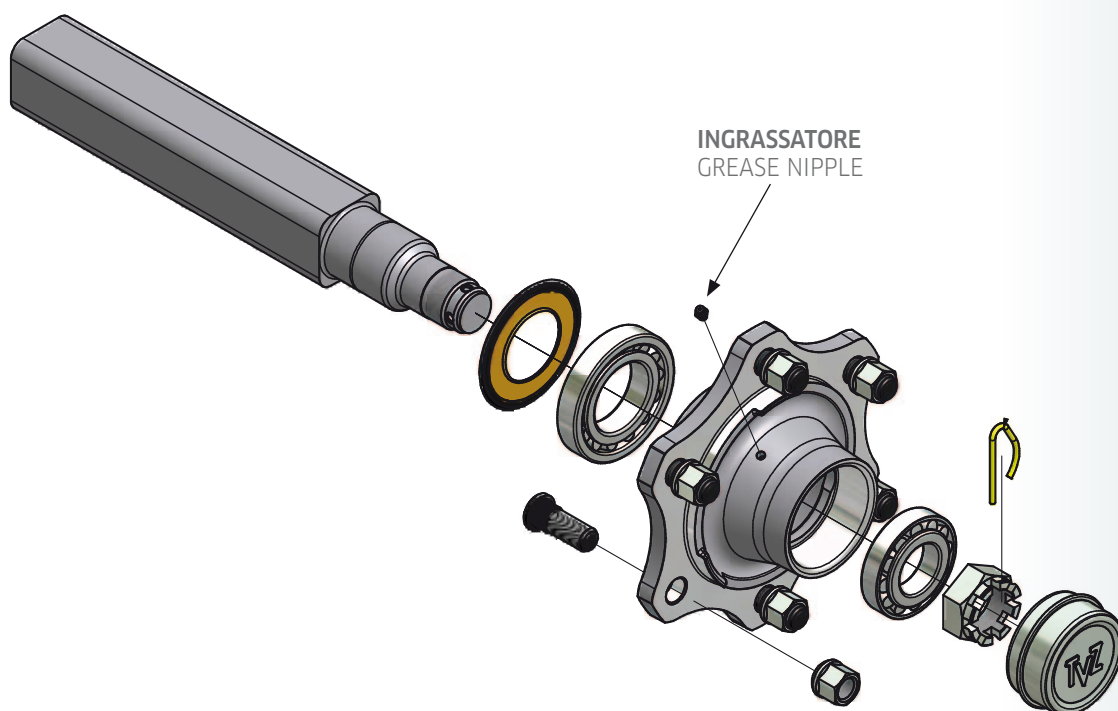
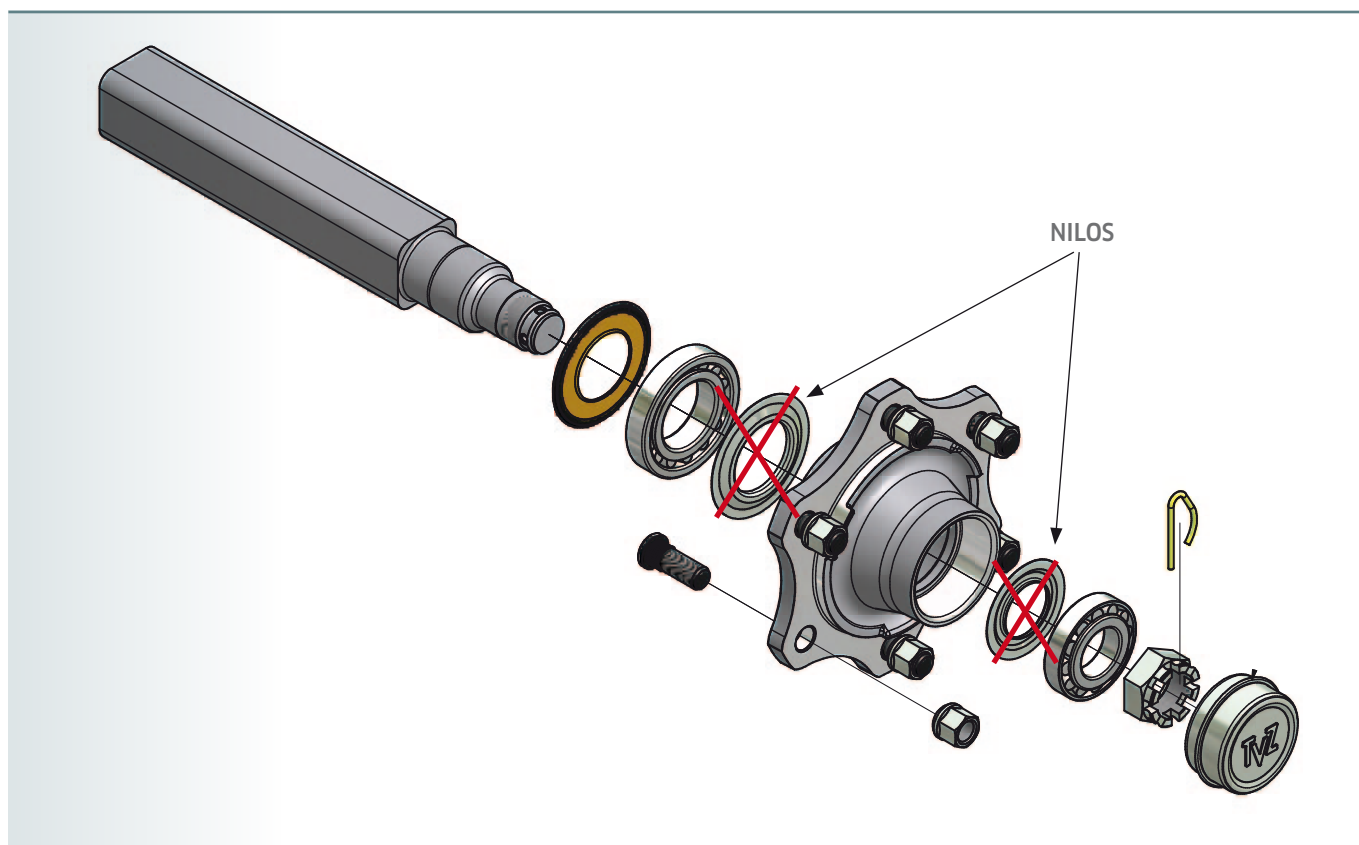
Per componenti del mozzo tenuta industriale calotta con viti
Spare parts for hub components with industrial seal and cap with screws



FAMIGLIA Family	TENUTA Seal	CUSCINETTO INTERNO Int. bearing	NILOS INTERNO Internal nilos	NILOS ESTERNO Ext. nilos	CUSCINETTO ESTERNO Ext. bearing	DADO AD INTAGLI Crown nut	SPINA ELASTICA Elastic pin	(x6) VITI CALOTTA Screw cap	CALOTTA Cap
	(4)	(5)	(6)	(8)	(9)	(13)	(14)	(17)	(15)
671 / 675	S5441301	S59132215	S5511301	S5530991	S59132212	S57548B5	S58209	S96308A0101	S56111002
880 / 881	S5441401	S59132216	S5511401	S5531091	S59132213	S57548B6	S58209	S96308A0101	S56112516
989	S5441501	S59132217	S5511502	S5511251	S59132214	S57548B6	S58209	S96308A0101	S56112516
991	S5441502	S59133118	S5511503	S5531191	S59132215	S57570D1	S58207	S96308A0101	S56113003

4° campo del codice - 4th field of the code.

Spiegazione in caso di ingrassatore Explanation in case of grease nipple



In caso di ingrassatore, gli anelli nilos non ci sono
If there is the grease nipple the nilos are not used



ASSALI & SEMIASSI
AXLES & STUB AXLES

Lead time

La flessibilità è sicuramente un punto di forza di TVZ. Un reparto di produzione dotato di macchine utensili all'avanguardia, un moderno sistema informatico di pianificazione della produzione, permettono consegne veloci, che per il cliente significano: riduzione delle giacenze e snellimento della pianificazione.

Lead time

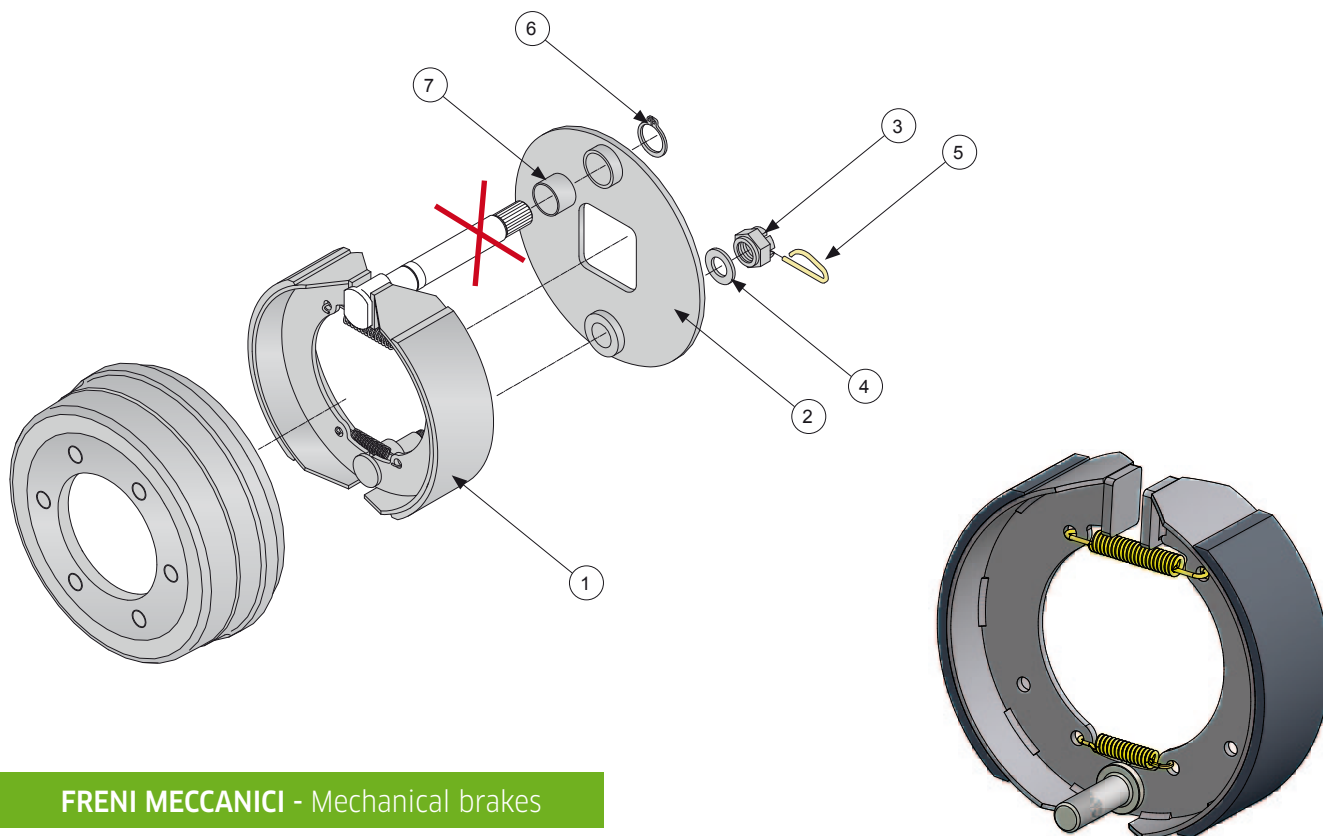
Flexibility is certainly one of TVZ's strengths. A production division equipped with state-of-the-art tool machines and a modern information technology system for production planning allows fast deliveries. To the customer this means a stock reduction and a streamlining of their planning.

Quinto campo del codice: FREN
Fifth field of the code: Brakes

CODE
A 100 10 898 406
A 100 10 898 406A 001
CODICE



Freni Brakes

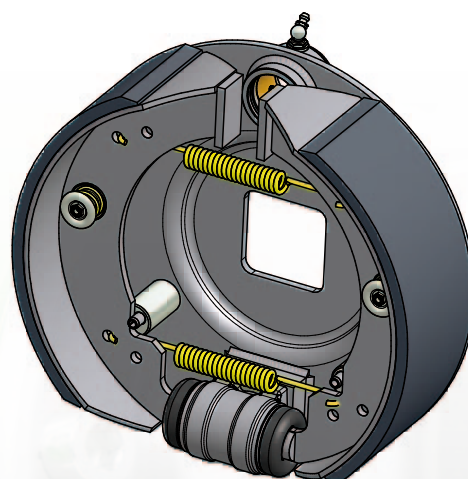


FRENI MECCANICI - Mechanical brakes

FAMIGLIA Family	MASSA FRENO Brake	PIASTRA PORTA CEPPI Brake support	DADO Nut	RONDELLA Washer	SPINA ELASTICA Elastic pin	ANELLO CAMMA Cam shaft ring	SEEGER CAMMA Cam shaft seeger	BRONZINA Bush
	(1)	(2)	(3)	(4)	(5)		(6)	(7)
140	S916MF140**							
20M	S9FCA200ZS	S741BG**11	S97112C1	S915RE12	NO	S914AO20	NO	NO
25M	S9FCA250Z60	S741DA**11	S97112C1	S915RE12	NO	S914A026	S915RES252	NO
30M - 30G	S9FCA300ZO	S741FD**11	S97116D1	S915RE16	NO	S914A026	S915RES252	NO
30S	S9FCA300ZZ98	S741IA**13	S57524B2	S9812401	S58203	S914A032	S58511	S921B3630
35G	S9FCA350ZO	S741NZ**13	S57524B2	S9812401	S58203	NO	NO	S921B3630
35S	S9FCA350Z8	S741NZ**13	S57524B2	S9812401	S58203	S914A032	S58511	S921B3630
40G	S9FCA400ZO	S741TA**13	S57524B2	S9812401	S58203	S914A032	S58511	S921B3630

→ 5° campo del codice - 5th field of the code.

** Indicare il quadro richiesto - Specify the square needed



FRENI IDRAULICI - Hydraulic brakes

FAMIGLIA Family	MASSA FRENO COMPLETA Complete b rake	ANELLO ALBERO CAMMA Cam shaft ring	SEEGER CAMMA Cam shaft seeger	SUPPORTO CAMMA Cam shaft support	LEVA FRENO Brake lever
9I	S731IY**	S58511	S58513	S744021**	S7611503

5° campo del codice - 5th field of the code.

** Indicare il quadro richiesto - *Specify the square needed*

Cilindro interno codice: S923C038 - S81001
Internal cylinder code: S923C038 - S81001



ASSALI & SEMIASSI
AXLES & STUB AXLES

L'unione fa la forza

"L'unione fa la forza" un frammento di saggezza popolare, che ben rappresenta una realtà imprenditoriale fatta di persone che privilegiano il rapporto diretto con altre persone, i costruttori delle macchine, dei quali conoscono a fondo le esigenze e le capacità.

Unity is strength

"Unity is strength": this wise saying well represents an entrepreneurial reality made up of people who favour direct relationships with other people, machine manufacturers, whose needs and skills they know very well.

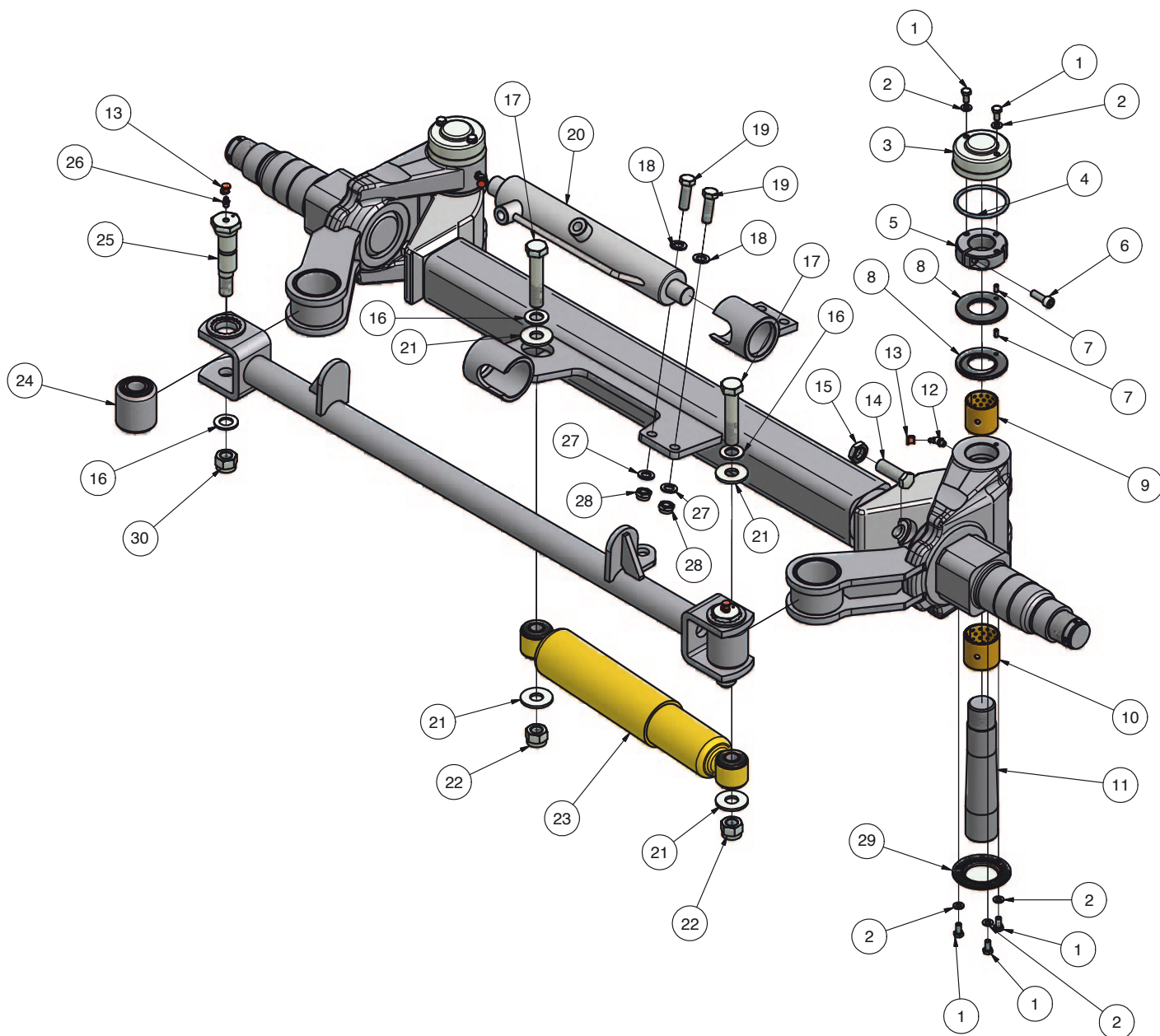
ASSALI STERZANTI
Steering axles

CODE
A 100 10 898 406A 001
CODICE



Esploso per corpo SQR light

Spare parts for SQR light body



Il codice identificativo dell'assale autosterzante SQR light inizia con H, esempio: **H**090 08671 30S001
I codici dei ricambi e le quantità sono validi unicamente per la versione standard.
Per versioni non standard contattare direttamente l'ufficio commerciale.

The code of the steering axle SQR light start with H, example: **H**090 08671 30S001
The codes of the spare parts and the quantity indicated are valid only for a standard version.
For unstandard version please contact the sales office.

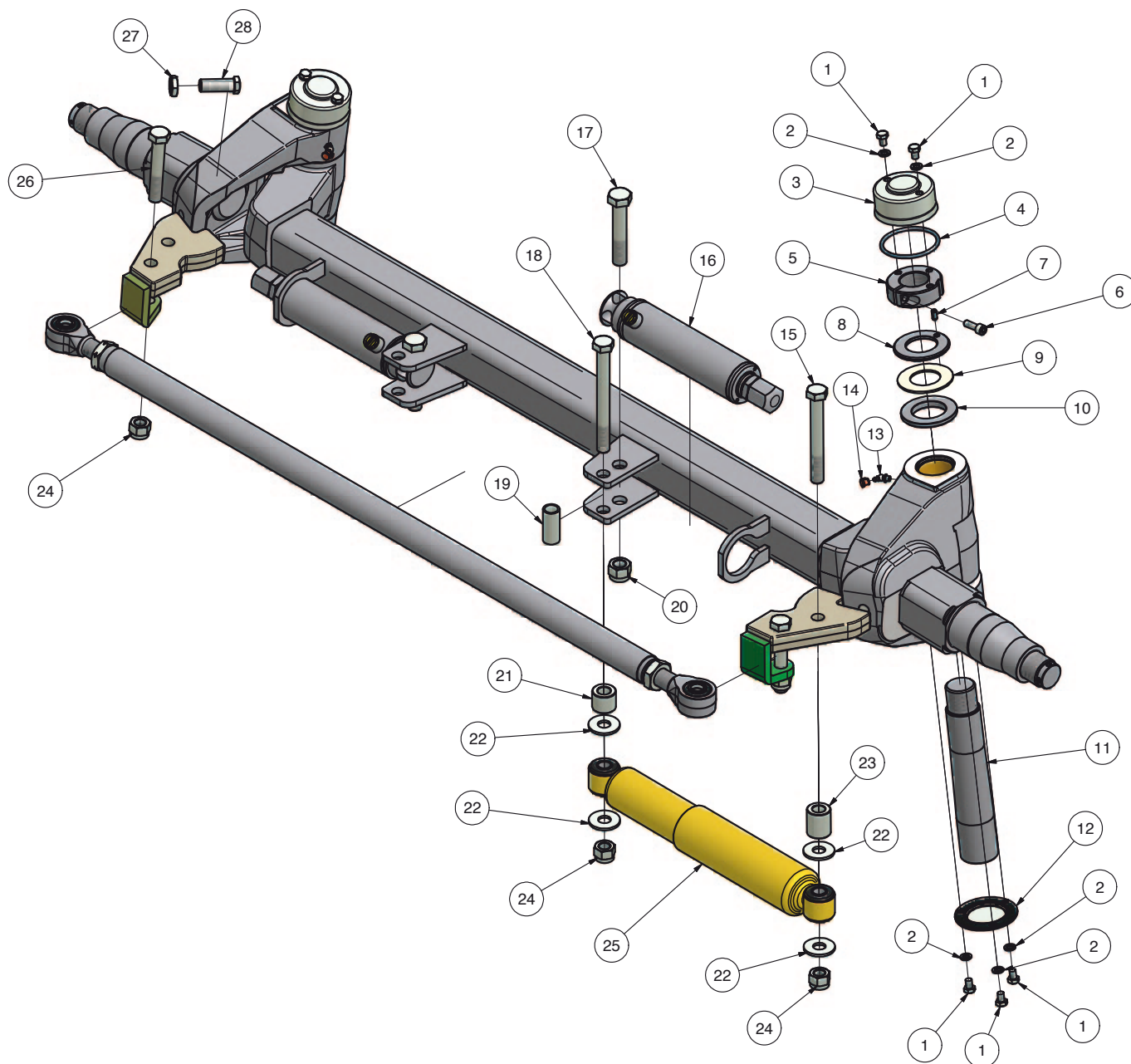


ASSALI STERZANTI Steering axles

POS. Pos.	CODICE Code	DESCRIZIONE Description	Q.TA' Q.ty
1	S96108A0161	VITE M8x1,25 L16 ISO 4017 ZINCATA - GALVANIZED SCREW M8x1,25 L16 ISO 4017	10
2	S9810081	RONDELLA PER M8 SP1,6 ISO 7089 ZINCATA - GALVANIZED WASHER FOR M8 TK1,6 ISO 7089	10
3	S56704	CALOTTA SUPERIORE PER PERNO - UPPER CAP FOR SPINDLE	2
4	S53107501	ANELLO OR 178 D075 FILO 5,4 - OR RING 178 D075 WIRE 5,4	2
5	S57642D1	GHIERA M42x2 PER PERNO - RING NUT M42x2 FOR SPINDLE	2
6	S96310B0301	VITE M10x1,5 L30 ISO 4762 ZINCATA - GALVANIZED SCREW M10x1,5 L30 ISO 4762	6
7	S58406	SPINA ELASTICA ISO 8752 6x12 - ELASTIC PIN ISO 8752 6x12	4
8	S57D04	RONDELLA PER GHIERA SQR LIGHT - WASHER FOR RING NUT SQR LIGHT	4
9	S772005	BOCCOLA TFP BMT-1 D45/50 L50 - BUSH TFP BMT-1 D45/50 L50	2
10	S772006	BOCCOLA TFP BMT-1 D50/55 L50 - BUSH TFP BMT-1 D50/55 L50	2
11	S83205001	PERNO CONICO PER SQR LIGHT - CONICAL SPINDLE FOR SQR LIGHT	2
12	S98608A2	INGRASSATORE M8x1,25 A 45° - GREASE NIPPLE M8x1,25 AT 45°	4
13	S986081C	TAPPO PER INGRASSATORE - CAP FOR GREASE NIPPLE	6
14	S57A20B1	VITE EH M20x1,5 L65 ZINCATA - GALVANIZED SCREW EH M20x1,5 L65	2
15	S97220B0	DADO M20x1,5 ISO 8675 ZINCATO - GALVANIZED NUT M20x1,5 ISO 8675	2
16	S9812002	RONDELLA D21 D37 SP3 ISO 7089 ZINCATA - GALVANIZED WASHER D21 D37 TK3 ISO 7089	6
17	S96120E1001	VITE M20x2,5 L100 ISO 4014 ZINCATA - GALVANIZED SCREW M20x2,5 L100 ISO 4014	2
18	S9811501	RONDELLA D15 D28 SP2,5 ISO 7089 ZINCATA - GALVANIZED WASHER D15 D28 TK2,5 ISO 7089	2
19	S96114D0451	VITE M14x2 L45 ISO 4014 ZINCATA - GALVANIZED SCREW M14x2 L45 ISO 4014	2
20	S811C060	CILINDRO IDRAULICO D60/30 C130 DOPPIO EFF. - DOUBLE EFFECT HYDRAULIC CYLINDER D60/30 S130	1
21	S9812001	RONDELLA D20,5 D50 SP4 ZINCATA - GALVANIZED WASHER D20,5 D50 TK 4	4
22	S97420E1	DADO AUTOBLOCCANTE M20x2,5 DIN 982 ZINCATO - GALVANIZED SELF LOCKING NUT M20x2,5 DIN 982	2
23	S8218001	AMMORTIZZATORE D80 C199 TIPO 7759 - SHOCK ABSORBER D80 S199 TYPE 7759	1
24	S8226302	SILENT BLOCK D28/63 L72	2
25	S8420001	PERNO ECCENTRICO PER SQR LIGHT - ECCENTRIC PIN FOR SQR LIGHT	2
26	S98608A1	INGRASSATORE M8x1,25 DIRITTO - STRAIGHT GREASE NIPPLE M8x1,25	2
27	S9811501	RONDELLA D15 D28 SP2,5 ISO 7089 ZINCATA - GALVANIZED WASHER D15 D28 TK2,5 ISO 7089	2
28	S97514D1	DADO AUTOBLOCCANTE M14x2 DIN 985 ZINCATO - GALVANIZED SELF LOCKING NUT M14x2 DIN 985	2
29	S56705	CALOTTA INFERIORE CON GUARNIZIONE - LOWER CAP WITH SEAL	2
30	S57920B1	DADO AUTOBLOCCANTE M20x1,5 ZINCATO - GALVANIZED SELF LOCKING NUT M20x1,5	2

Esploso per corpo SQR

Spare parts for SQR body



Il codice identificativo dell'assale autosterzante SQR inizia con X, esempio: **X**100 10898 406A001
I codici dei ricambi e le quantità sono validi unicamente per la versione standard.
Per versioni non standard contattare direttamente l'ufficio commerciale.

The code of the steering axle SQR start with X, example: **X**100 10898 406A001
The codes of the spare parts and the quantity indicated are valid only for a standard version.
For unstandard version please contact the sales office.



ASSALI STERZANTI Steering axles

POS Pos.	CODICE Code	DESCRIZIONE Description	Q.TA' Q.ty
1	S96110B0141	VITE M10x1,5 L14 ISO 4017 ZINCATA - GALVANIZED SCREW M10x1,5 L14 ISO 4017	10
2	S9830101	RONDELLA GROWER PER M10 DIN 127 - GROWER WASHER FOR M10 DIN 127	10
3	S56701	CALOTTA SUPERIORE PER PERNO - UPPER CAP FOR SPINDLE	2
4	S53108501	ANELLO OR 6337 D85 FILO 5,34 - OR RING 6337 D85 WIRE 5,34	2
5	S57648D1	GHIERA M48x2 PER PERNO - RING NUT M48x2 FOR SPINDLE	2
6	S96310B0301	VITE M10x1,5 L30 ISO 4762 ZINCATA - GALVANIZED SCREW M10x1,5 L30 ISO 4762	2
7	S58405	SPINA ELASTICA ISO 8752 8x16 - ELASTIC PIN ISO 8752 8x16	2
8	S57D01	DISTANZIALE PER GHIERA SQR - SPACER FOR RING NUT SQR	2
9	S57D02	RONDELLA PER GHIERA SQR - WASHER FOR RING NUT SQR	2
10	S57D03	RONDELLA CON COLLARE PER GHIERA SQR - WASHER WITH COLLAR FOR RING NUT SQR	2
11	S83206001	PERNO CONICO PER SQR - CONICAL SPINDLE FOR SQR	2
12	S56702	CALOTTA INFERIORE CON GUARNIZIONE - LOWER CAP WITH SEAL	2
13	S98608A2	INGRASSATORE M8x1,25 A 45° - GREASE NIPPLE M8x1,25 AT 45°	4
14	S986081C	TAPPO PER INGRASSATORE - CAP FOR GREASE NIPPLE	4
15	S96120E1901	VITE M20x2,5 L190 ISO 4014 ZINCATA - GALVANIZED SCREW M20x2,5 L190 ISO 4014	1
16	S8116010001	CILINDRO IDRAULICO D60/40 C100 A SEMPLICE EFF. - SIMPLE EFF. HYDRAULIC CYLINDER D60/40 S100	2
17	S96122F1201	VITE M22x2,5 L120 ISO 4014 ZINCATA - GALVANIZED SCREW M22x2,5 L120 ISO 4014	2
18	S96120E2001	VITE M20x2,5 L200 ISO 4014 ZINCATA - GALVANIZED SCREW M20x2,5 L200 ISO 4014	1
19	S9850211	DISTANZIALE D21 D27 L60 - SPACER D21 D27 L60	1
20	S97422F1	DADO AUTOBLOCCANTE M22x2,5 DIN 982 ZINCATO - GALVANIZED SELF LOCKING NUT M22x2,5 DIN 982	2
21	S9850201	DISTANZIALE D20,5 D38 L32 - SPACER D20,5 D38 L32	1
22	S9812001	RONDELLA D20,5 D50 SP4 ZINCATA - GALVANIZED WASHER D20,5 D50 TK4	4
23	S9850202T	DISTANZIALE D20,5 D38 L75 - SPACER D20,5 D38 L75	1
24	S97420E1	DADO AUTOBLOCCANTE M20x2,5 DIN 982 ZINCATO - GALVANIZED SELF LOCKING NUT M20x2,5 DIN 982	4
25	S8218301	AMMORTIZZATORE D83 C238 DOPPIO EFFETTO - DOUBLE EFFECT SHOCK ABSORBER D83 S238	1
26	S96120E1201	VITE M20x2,5 L120 ISO 4014 ZINCATA - GALVANIZED SCREW M20x2,5 L120 ISO 4014	2
27	S97120B2	DADO M20x2,5 ZINCATO - GALVANIZED NUT M20x2,5	2
28	S96120E0501	VITE EH M20x2,5 L50 ZINCATA - GALVANIZED SCREW EH M20x2,5 L50	2



ASSALI & SEMIASSI
AXLES & STUB AXLES

Affidabilità e dinamicità

La ricerca e la sperimentazione sui materiali ed il costante aggiornamento dei processi produttivi fa di ogni prodotto TVZ un compagno di lavoro fedele e generoso sia per l'agricoltore che per il trasportatore. TVZ è sinonimo di flessibilità e la consegna "just in time" è il suo punto di forza. Questa caratteristica, che la differenzia dalle altre società operanti nel settore, si basa sulla progettazione molto attenta alla modularità dei componenti, sui sistemi produttivi efficienti e versatili e su uno stock di prodotti "intelligente" e ben organizzato, gestito da collaboratori molto efficienti. La ricerca e sperimentazione fa di TVZ un'azienda non grande, ma sempre aggiornata sulle nuove tendenze della meccanizzazione agricola e reattiva come nessun altro. La gamma di prodotti TVZ è in grado di soddisfare le esigenze di tutti i costruttori di macchine agricole sia che si tratti di assi, semiassi e sospensioni, conformi alle vigenti normative europee, sia che richiedano lo studio di soluzioni personalizzate.

Reliability and dynamism

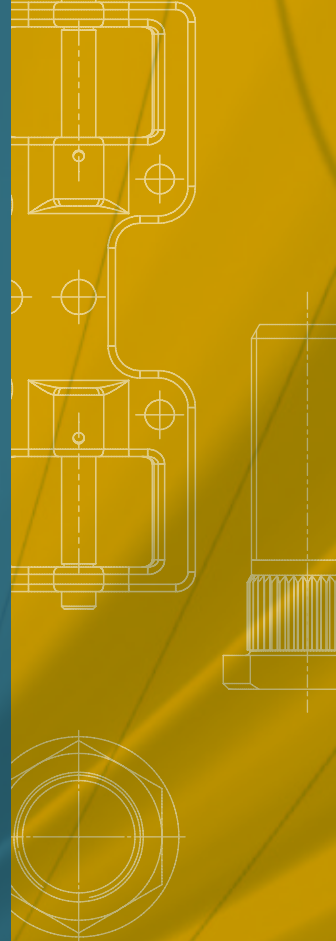
Material research and testing and the constant updating of production processes make each TVZ product a faithful and helpful workmate for both farmers and transporters.

TVZ is synonymous with flexibility and "just in time" delivery is its strength. This characteristic, which sets TVZ apart from other companies operating in this sector, is based on a design process which pays careful attention to the modularity of its components, to efficient and versatile production systems and to an "intelligent" and well-organized product stock managed by a very efficient team of workers.

Though remaining a medium size company, TVZ has always been paying great attention to research and testing in order to keep updated and to be reactive to the new trends in agricultural mechanization. The range of TVZ products is able to satisfy the requirements of all agricultural machinery manufacturers as regards axles, axle shafts and suspensions, complying with the current European standards, as well as in the research for customized products.

2

**Individuare i ricambi
dall'aspetto**
Identify the spare parts
by the shape

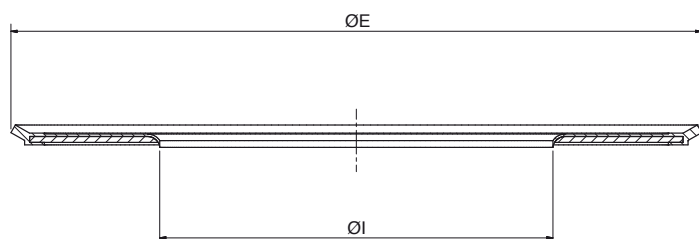


TENUTE_CUSCINETTI
Seal_Bearings



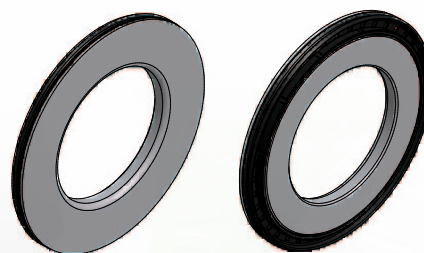
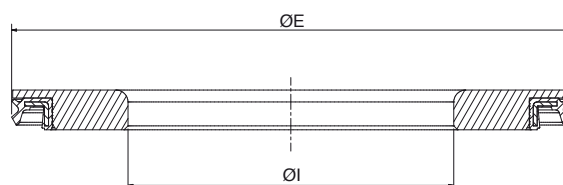
Tenute Seal

STANDARD



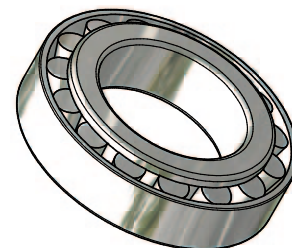
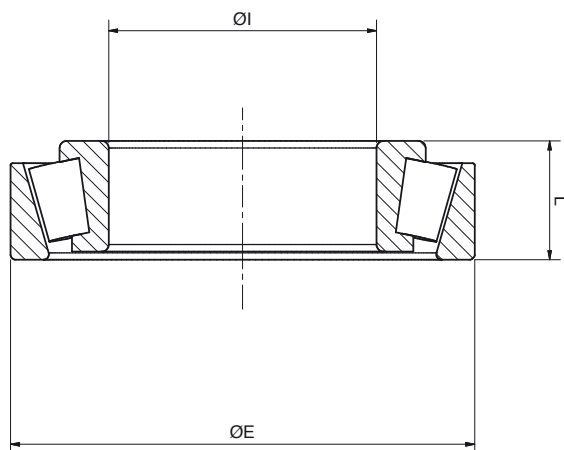
CODICE Code	ØI (mm)	ØE (mm)	TIPO Type
S5410521	25	52	STANDARD
S5410621	30	62	STANDARD
S5410721	35	72	STANDARD
S5410801	40	80	STANDARD
S5410851	45	85	STANDARD
S5420851	47	85	INDUSTRIALE
S5410901	50	90	STANDARD
S5420901	52	90	INDUSTRIALE
S5411001	55	100	STANDARD
S5441001	56	100	INDUSTRIALE
S5411002	65	100	STANDARD
S5411201	65	120	STANDARD
S5441201	67	120	INDUSTRIALE
S5441251	72	125	INDUSTRIALE
S5411301	75	130	STANDARD
S5441301	77	130	INDUSTRIALE
S5411401	80	140	STANDARD
S5441401	82	140	INDUSTRIALE
S5441501	87	150	INDUSTRIALE
S5441502	92	150	INDUSTRIALE

INDUSTRIALE - Industrial



Cuscinetti

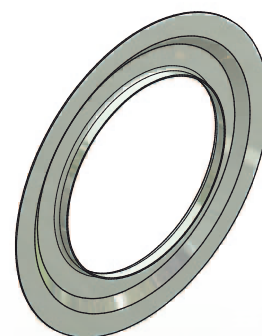
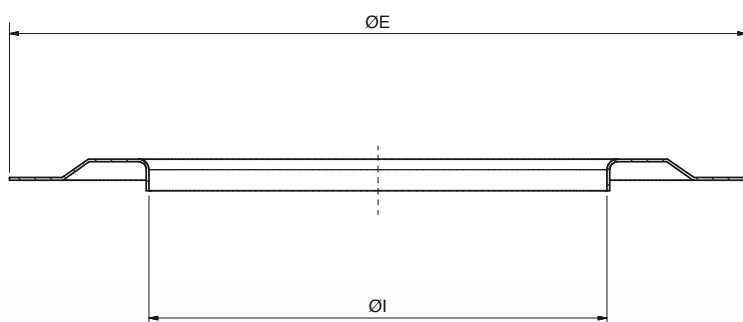
Bearings



CODICE Code	CODICE INTERNAZIONALE International code	ØI (mm)	ØE (mm)	L (mm)	TIPO Type
S5946204-2RS1	6204	20	47	14	SFERE - ball bearing
S5946205-2RS1	6205	25	52	15	SFERE - ball bearing
S5946206-2RS1	6206	30	62	16	SFERE - ball bearing
S59130204	30204	20	47	15,25	RULLI CONICI - tapered bearing
S59130205	30205	25	52	16,25	RULLI CONICI - tapered bearing
S59130206	30206	30	62	17,25	RULLI CONICI - tapered bearing
S59130207	30207	35	72	18,25	RULLI CONICI - tapered bearing
S59130208	30208	40	80	19,75	RULLI CONICI - tapered bearing
S59130209	30209	45	85	20,75	RULLI CONICI - tapered bearing
S59130210	30210	50	90	21,75	RULLI CONICI - tapered bearing
S59132210	32210	50	90	24,75	RULLI CONICI - tapered bearing
S59130211	30211	55	100	22,75	RULLI CONICI - tapered bearing
S59132212	32212	60	110	29,75	RULLI CONICI - tapered bearing
S59130213	30213	65	120	24,75	RULLI CONICI - tapered bearing
S59132013	32013	65	100	23	RULLI CONICI - tapered bearing
S59132213	32213	65	120	32,75	RULLI CONICI - tapered bearing
S59132214	32214	70	125	33,25	RULLI CONICI - tapered bearing
S59132215	32215	75	130	33,25	RULLI CONICI - tapered bearing
S59133215	33215	75	130	41	RULLI CONICI - tapered bearing
S59132216	32216	80	140	33,25	RULLI CONICI - tapered bearing
S59132217	32217	85	150	38,5	RULLI CONICI - tapered bearing
S59133118	33118	90	150	45	RULLI CONICI - tapered bearing

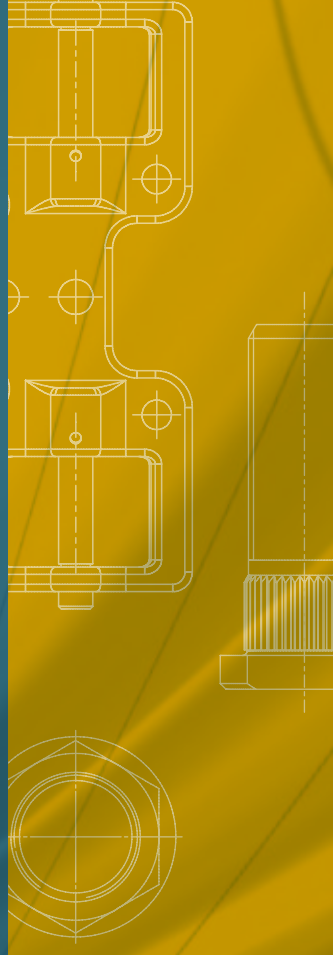
Nilos

Nilos



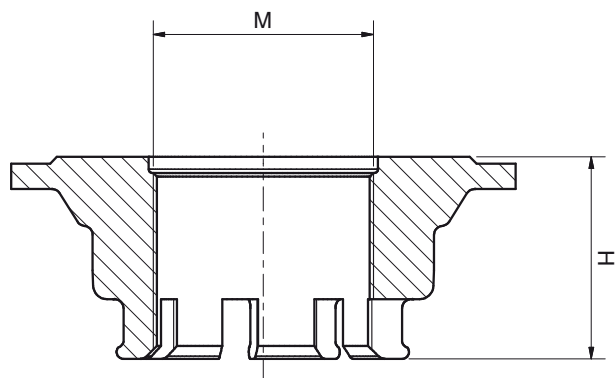
CODICE Code	$\varnothing I$ (mm)	$\varnothing E$ (mm)	CUSCINETTO Bearing
S5510471	23	47	30204
S5510521	27	52	30205
S5510621	33	62	30206
S5510721	47	72	30207
S5510801	45	80	30208
S5510851	49	85	30209
S5510901	52	90	30210
S5510901	52	90	32210
S5511001	58	100	30211
S5530991	62	99	32212
S5511201	74	120	30213
S5510991	69	99	32013
S5531091	67	109	32213
S5511251	72	114	32214
S5511301	80	130	32215
S5531191	77	119	33215
S5511401	87	140	32216
S5511502	92	150	32217
S5511503	95	150	33118

CHIUSURE MOZZI
Hubs closures

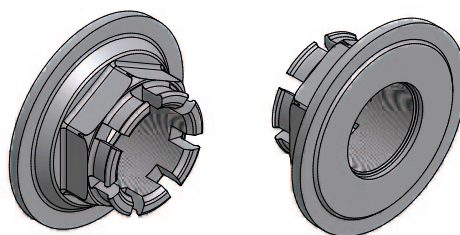


Dadi intagli

Crown nuts



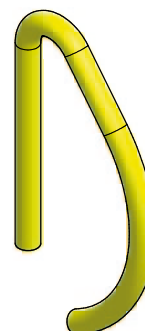
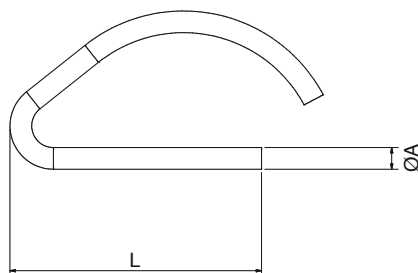
CODICE Code	M	H (mm)	CHIAVE (mm) Key
S57520B1	M20x1,5	17	32
S57527B1	M27x1,5	20	41
S57530B2	M30x1,5	23	46
S57539B1	M39x1,5	28	50
S57539B2	M39x1,5	30	60
S57548B5	M48x1,5	38	65
S57548B6	M45x1,5	44	65
S57570D1	M70x2	55	90



Spine elastiche

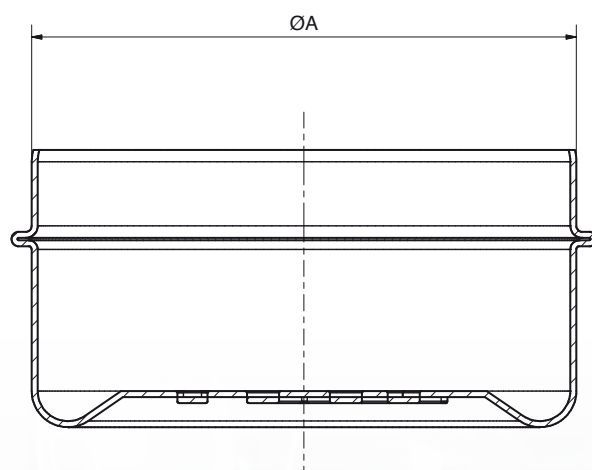
Elastic pins

CODICE Code	ØA (mm)	L (mm)
S58201	2	34
S58202	2,5	38
S58204	3	50
S58205	4	64
S58207	7	106
S58209	5	58



Calotte

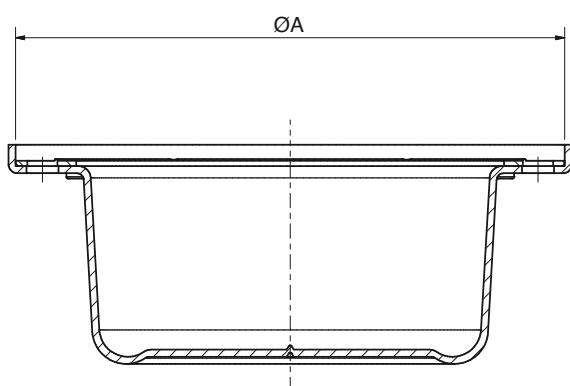
Caps



CODICE Code	ØA (mm)	TIPO Type
S56104302	43	PRESSIONE - Pressure
S56104705	47	PRESSIONE - Pressure
S56105206	52	PRESSIONE - Pressure
S56106210	62	PRESSIONE - Pressure
S56107206	72	PRESSIONE - Pressure
S56108009	80	PRESSIONE - Pressure
S56108502	85	PRESSIONE - Pressure
S56109009	90	PRESSIONE - Pressure
S56110002	100	PRESSIONE - Pressure
S56111006	110	PRESSIONE - Pressure
S56112002	120	PRESSIONE - Pressure

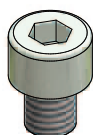
Calotte

Caps

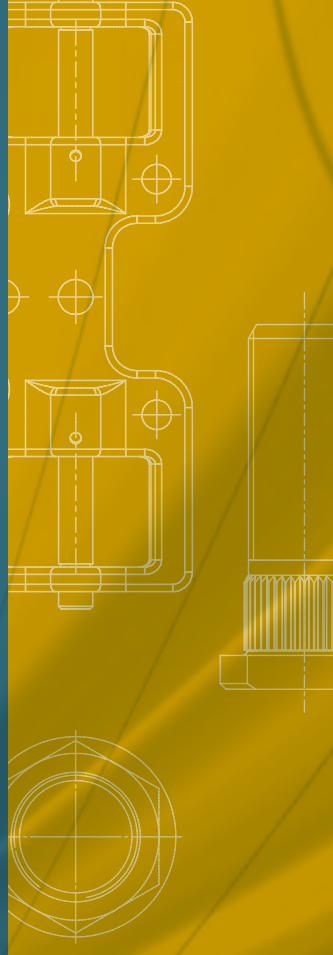


CODICE Code	$\varnothing A$ (mm)	TIPO Type	CODICE VITE Screw code
S56111002	138	CON VITI - With screws	S96308A0101
S56112516	155	CON VITI - With screws	S96308A0101
S56113003	158	CON VITI - With screws	S96308A0101

Per ogni calotta servono 6 viti
For any cap are needed 6 screws



BLOCCAGGIO RUOTE
Wheels fittings



Colonnine Studs

Fig 1

Senza freno - Monoblocco
Without brake - Solid drum

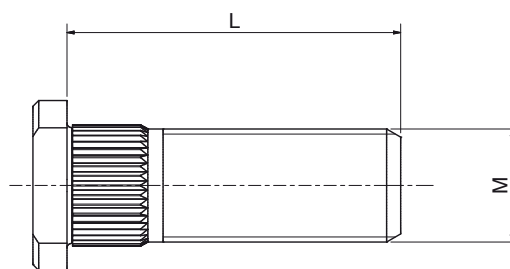
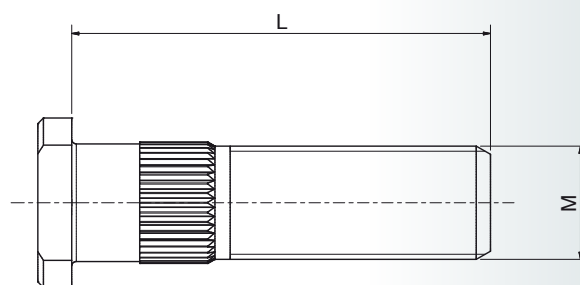



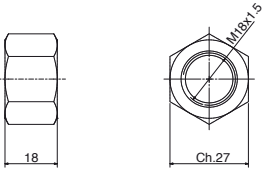
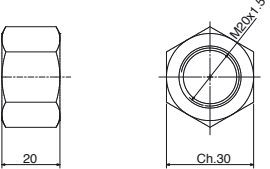
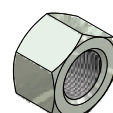
Fig 2

Freno combinato
Combined brake



CODICE Code	M	L (mm)	TIPO Type	ATTACCO Fitting	FIGURE Picture (FIG.)
S57112B1	M12 x 1.5	36	SENZA FRENO - Without brake	SINGOLO - Single	1
S57114B1	M14 x 1.5	41	SENZA FRENO - Without brake	SINGOLO - Single	1
S57116B1	M16 x 1.5	45	SENZA FRENO - Without brake	SINGOLO - Single	1
S57118B1	M18 x 1.5	49	SENZA FRENO - Without brake	SINGOLO - Single	1
S57118B3	M18 x 1.5	60	SENZA FRENO - Without brake	GEMELLATO - Twin	1
S57118B4	M18 x 1.5	61	FRENO COMBINATO - Combined brake	SINGOLO - Single	2
S57118B5	M18 x 1.5	75	FRENO COMBINATO - Combined brake	GEMELLATO - Twin	2
S57120B1	M20 x 1.5	59	SENZA FRENO - Without brake	SINGOLO - Single	1
S57120B2	M20 x 1.5	70	SENZA FRENO - Without brake	GEMELLATO - Twin	1
S57120B4	M20 x 1.5	74	FRENO COMBINATO - Combined brake	SINGOLO - Single	2
S57120B5	M20 x 1.5	87	FRENO COMBINATO - Combined brake	GEMELLATO - Twin	2
S57122B2	M22 x 1.5	71	SENZA FRENO - Without brake	SINGOLO - Single	1
S57122B3	M22 x 1.5	80	FRENO COMBINATO - Combined brake	SINGOLO - Single	2
S57122B4	M22 x 1.5	93	FRENO COMBINATO - Combined brake	GEMELLATO - Twin	2

Dadi Nuts

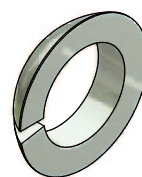
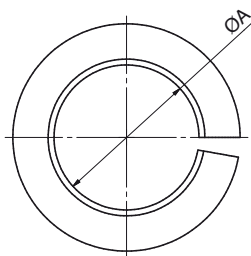
		CODICE Code	ATTACCO Fitting	TIPO Type	
		S57312B1	SINGOLO Single	SFERICO Spherical	
		S57314B1	SINGOLO Single	SFERICO Spherical	
		S57316B1	SINGOLO Single	SFERICO Spherical	
		S57318B1	SINGOLO + GEMELLATO Single + Twin	PIANO Flat	
		S57318B4	SINGOLO Single	SFERICO Spherical	
		S57320B1	SINGOLO + GEMELLATO Single + Twin	PIANO Flat	
		S57322B1	SINGOLO + GEMELLATO Single + Twin	PIANO Flat	

Il dado piano necessita della rondella limes - Se l'attacco è gemellato si usa il dado piano + rondella limes + rondella gemellato.
The flat nut need the limes washer - In case of twin fitting is to use the flat nut + the limes washer + the twin washer.

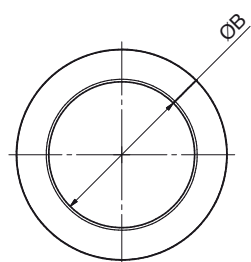
Rondelle

Washers

RONDELLA LIMES - Limes washer



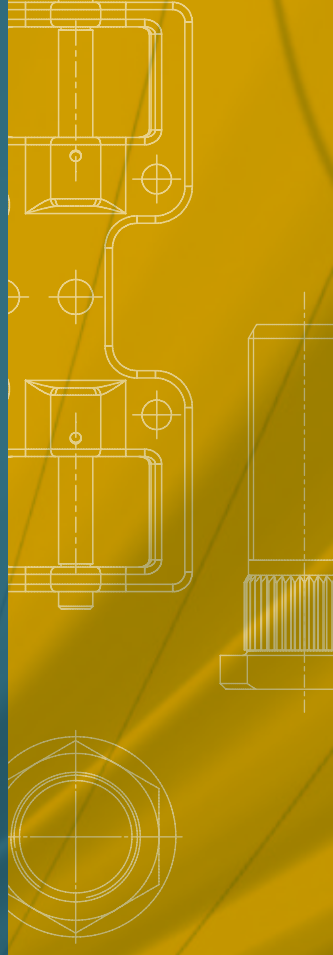
RONDELLA PER GEMELLATO - Twin washer



CODICE Code	ØA (mm)	ØB (mm)	TIPO Type
S574181	18		LIMES
S574182		18	GEMELLATO - Twin
S574201	20		LIMES
S574202		20	GEMELLATO - Twin
S574221	22		LIMES
S574222		22	GEMELLATO - Twin

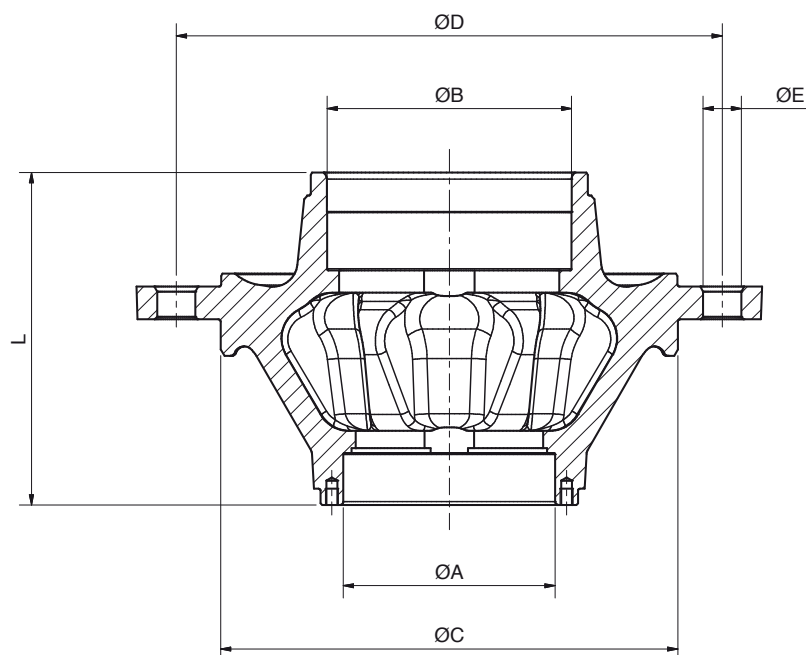
La rondella Gemellata si usa solo in caso di ruote gemellate.
The Twin washer is to use only in case of twin wheels.

MOZZI_TAMBURI_MONOBLOCCHI
Hubs_Drums_Solid Drums

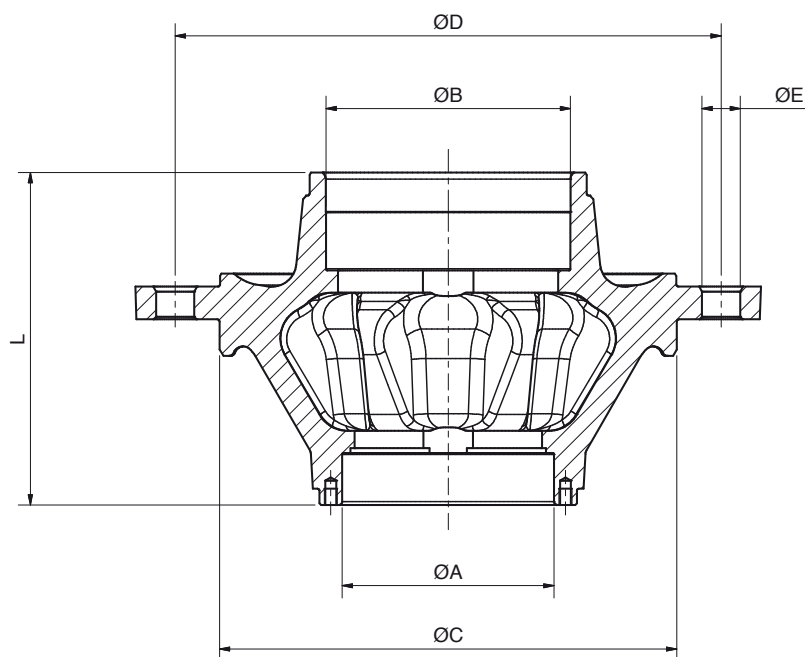


Mozzi

Hubs



CODICE Code	ØA (mm)	ØB (mm)	ØC (mm)	ØD (mm)	ØE (mm)	L (mm)	N° DI FOR N° of holes	TAPPO Cap
S61LZBA014	47	52	57	100	13	66	4	P
S61L4BA002	47	52	58	98	13	66	4	P
S61LBBA002	47	52	62	95	13	66	4	P
S61LCBA001	47	52	84	130	16,5	65	4	P
S61LZDA002	47	62	57	100	13	80	4	P
S61L4DA001	47	62	58	98	13	80	4	P
S61LADA001	47	62	60	100	13	80	4	P
S61LBDA001	47	62	62	95	13	80	4	P
S61LBFB001	52	62	62	95	13	80	4	P
S61L5GA009	52	72	94	140	16,5	95	5	P
S61L5JA006	62	75	94	140	16,5	100	5	P
S61L5IA003	62	80	94	140	16,5	100	5	P
S61L6JA002	62	85	160	205	19	100	6	P
S61L6KA002	72	90	160	205	19	106	6	P
S61L6LA008	80	100	160	205	19	118	6	P
S61L6NA003	90	120	160	205	21	148	6	P
S61L6NA001	90	120	160	205	19	152	6	P
S61L8NA003	90	120	220	275	21	148	8	P

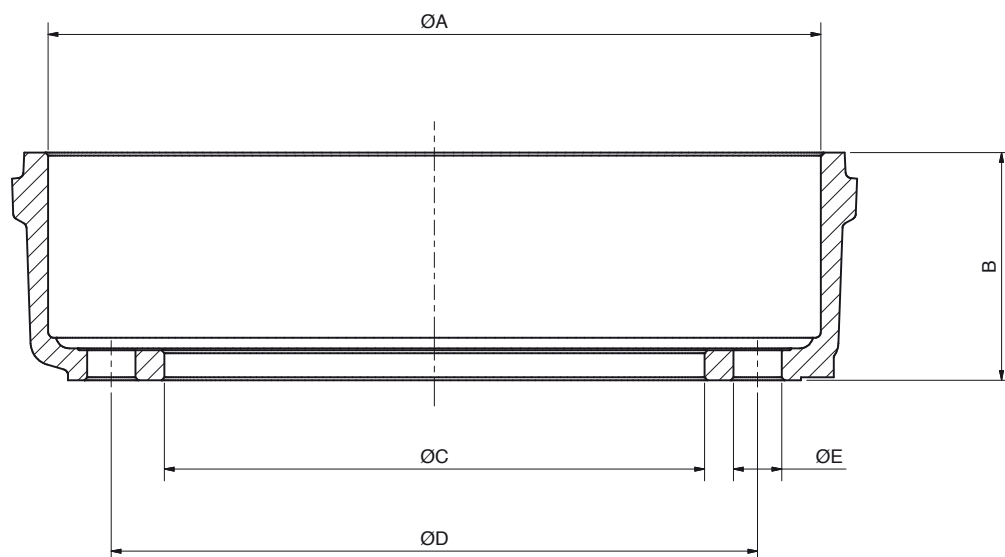


CODICE code	ØA (mm)	ØB (mm)	ØC (mm)	ØD (mm)	ØE (mm)	L (mm)	N° DI FOR N° of holes	TAPPO Cap
S61L8NA001	90	120	220	275	19	152	8	P
S61L6QC004	100	125	160	205	21	147	6	P
S61L6QC001	100	125	160	205	19	147	6	P
S61L8QC002	100	125	220	275	21	147	8	P
S61L8QC001	100	125	220	275	19	147	8	P
S61L6RD001	110	130	160	205	19	177	6	P
S61L08110130260	110	130	220	275	21	176	8	P
S61L08110130250	110	130	220	275	19	176	8	P
S61L8RD002	110	130	220,5	275	21	155	8	V
S61L8RD001	110	130	220,5	275	19	155	8	V
S61L08120140260	120	140	220	275	21	177	8	P
S61L8TD002	120	140	220,5	275	21	160	8	V
S61L1TD002	120	140	280,5	335	23,5	160	10	V
S61LRUI001	125	150	175,8	225	23,5	167	10	V
S61L8UI002	125	150	220,5	275	21	167	8	V
S61L1UI002	125	150	280,5	335	23,5	167	10	V
S61L1VI001	130	150	280,5	335	23,5	204	10	V

P = PRESSIONE - PRESSURE
V = CON VITI - WITH SCREWS

Tamburi

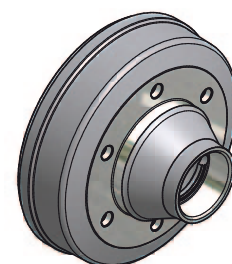
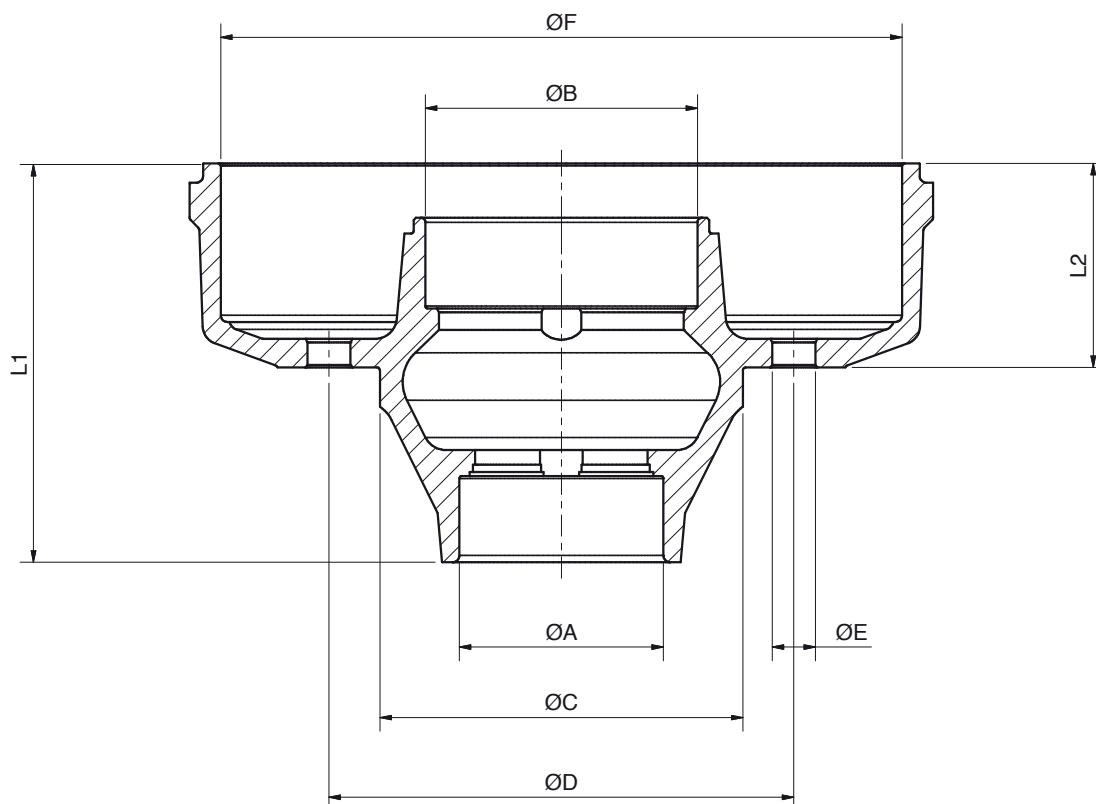
Drums



CODICE Code	ØA (mm)	ØC (mm)	ØD (mm)	ØE (mm)	B (mm)	N° DI FORI N° of holes	FRENO Brake
S66LFG0602	300	160	205	20,5	90	6	300X60
S66LFG0603	300	160	205	22	90	6	300X60
S66LFG0801	300	220	275	22	90	8	300X60
S66LJB0605	300	160	205	20,5	133	6	300X100
S66LJB0804	300	220	275	22	132	8	300X100
S66LKB0601	300	160	205	20,5	176	6	300X135
S66LKB0802	300	220	275	22	175	8	300X135
S66LKB1R01	300	185	225	25	176	10	300X135
S66LNF0603	350	160	205	20,5	98	6	350X60
S66LNF0803	350	220	275	22	96	8	350X60
S66LQC0602	350	160	205	20,5	152	6	350X90
S66LQC0802	350	220	275	22	150	8	350X90
S66LTG0801	400	220	275	22	120	6	400X80
S66LTG1001	400	280	335	25	118	10	400X80
S66LVA0801	406	220	275	22	164	8	406X120
S66LVA1001	406	280	335	25	162	10	406X120
S66LWA1001	406	280	335	25	177	10	406X140

Monoblocchi

Solid Drums



CODICE Code	ØA (mm)	ØB (mm)	ØC (mm)	ØD (mm)	ØE (mm)	ØF (mm)	L1 (mm)	L2 (mm)	N° DI FORI N° of holes	FRENO Brake
S65L5GA01	52	72	94	140	16,5	200	110	58	5	200x40
S65L5IA01	62	80	94	140	16,5	200	118	64	5	200x40
S65L5JA03	62	85	94	140	16,5	200	118	64	5	200x40
S65L5JA01	62	85	94	140	16,5	250	140	86	5	250x60
S65L6JA01	62	85	160	205	19	250	140	86	6	250x60
S65L6LA03	80	100	160	205	19	250	152	86	6	250x60
S65L6LA06	80	100	160	205	19	300	158	92	6	300x60
S65L6NA01	90	120	160	205	19	300	176	90	6	300x60
S65L6QC01	100	125	160	205	19	300	169	90	6	300x60
S65L8NA01	90	120	220	275	19	300	176	90	8	300x60
S65L8QC01	100	125	220	275	19	300	169	90	8	300x60
S65L8QC02	100	125	220	275	21	300	169	90	8	300x60



ASSALI & SEMIASSI
AXLES & STUB AXLES

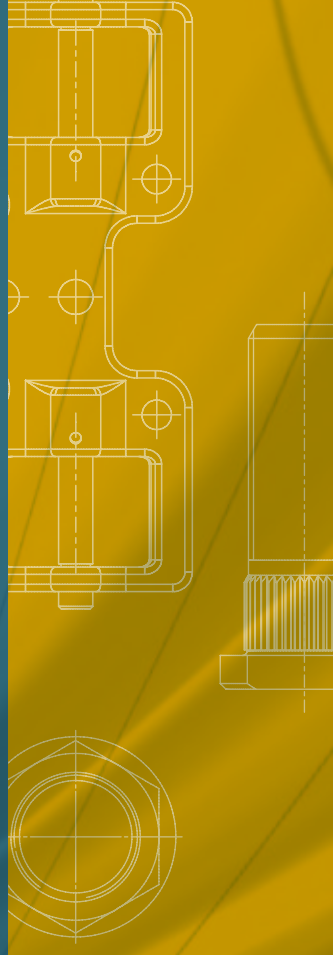
L'unione fa la forza

"L'unione fa la forza" un frammento di saggezza popolare, che ben rappresenta una realtà imprenditoriale fatta di persone che privilegiano il rapporto diretto con altre persone, i costruttori delle macchine, dei quali conoscono a fondo le esigenze e le capacità.

Unity is strength

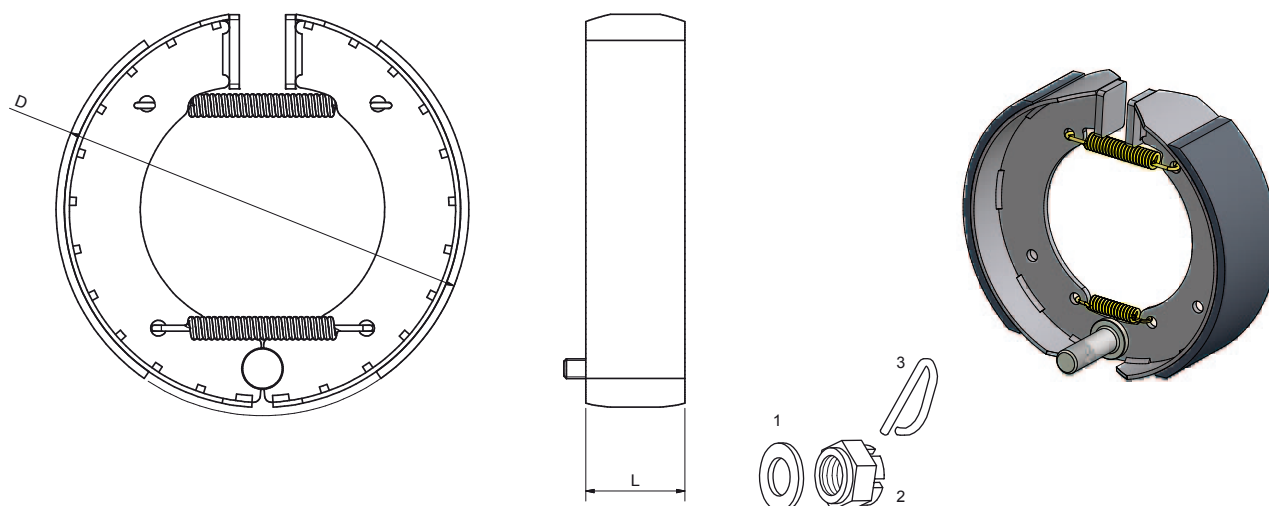
"Unity is strength": this wise saying well represents an entrepreneurial reality made up of people who favour direct relationships with other people, machine manufacturers, whose needs and skills they know very well.

FRENI
Brakes



Freni

Brakes

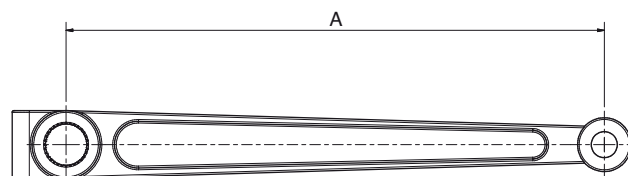
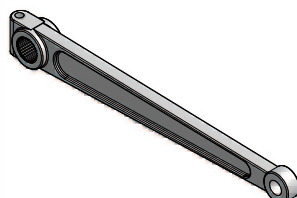


CODICE Code	DIAMETRO Diameter (ØA - mm)	LARGHEZZA Width (L - mm)	RONDELLA Washer (1)	DADO Nut (2)	SPINA ELASTICA Elasti pin (3)	PER COLLAUDO For Homologation (*)
S916MF140	140	30	NO	NO	NO	NO
S9FCA200ZS	200	40	S915RE12	S97112C1	NO	NO
S9FCA250Z60	250	60	S915RE12	S97112C1	NO	NO
S9FCA250Z60V	250	60	S915RE12	S97112C1	NO	SI
S9FCA300ZO	300	60	S915RE16	S97116D1	NO	NO
S9FCA300ZOV	300	60	S915RE16	S97116D1	NO	SI
S9FCA300ZZ98	300	90	S915R24	S57524B2	S58203	NO
S9FCA300ZZ98V	300	90	S915R24	S57524B2	S58203	SI
S9FCA350ZO	350	60	S915R24	S57524B2	S58203	NO
S9FCA350ZOV	350	60	S915R24	S57524B2	S58203	SI
S9FCA350Z8	350	80	S915R24	S57524B2	S58203	NO
S9FCA400ZO	400	80	S915R24	S57524B2	S58203	NO
S9FCA400ZOV	400	80	S915R24	S57524B2	S58203	SI
S731VE01	406	120	NO	NO	NO	SI
S732WA01	406	140	NO	NO	NO	SI
S9FC310	300	100	NO	NO	NO	SI
S9FC314	300	135	NO	NO	NO	SI

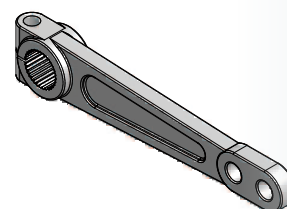
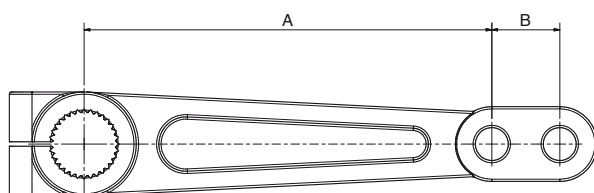
Le masse freno sono vendute assemblate - The brake shoes are sold assembled
* Solo per l'Italia - Only for Italy

Leve Levers

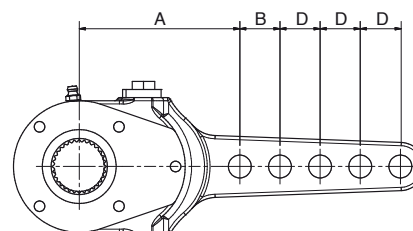
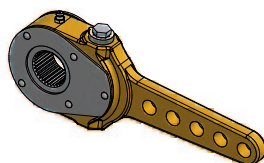
Fissa con 1 foro - Fixed with 1 hole



Fissa con 2 fori - Fixed with 2 holes



Registrabile - Adjustable

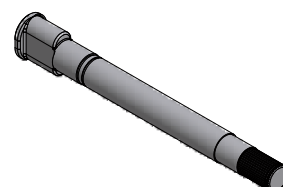
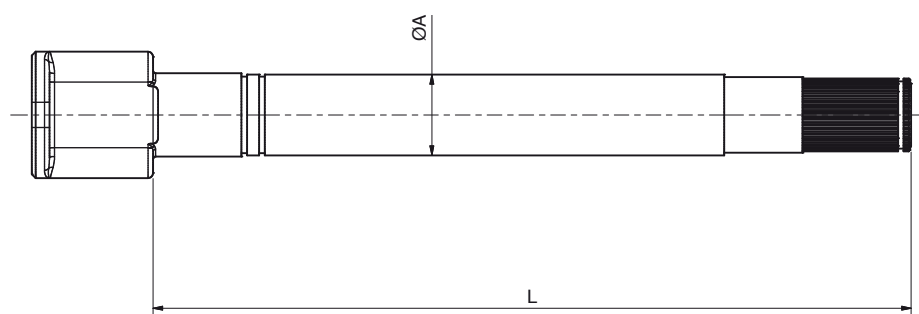


CODICE Code	DIAMETRO CAMMA Cam shaft diameter (mm)	A (mm)	B (mm)	D (mm)	TIPO Type
S7611601	16	90			F
S7612001	20	110	30		F
S7612002	20	210			F
S7612003	20	300			F
S7612601	26	150	30		F
S7612602	26	210	30		F
S7612603	26	300			F
S7613201	32	150	30		F
S7613202	32	180	30		F
S7621501	35	125	150	30	R
S7623203	32	125	150	30	R

F = Fissa - Fixed R = Registrabile - Adjustable

Alberi Camma

Cam shaft



CODICE code	ØA (mm)	L (mm)
S75120L070	20	70
S75120L120	20	120
S75120L150	20	150
S75120L200	20	200
S75120L235	20	235
S75120L265	20	265
S75120L285	20	285
S75120L330	20	330
S75120L360	20	360
S75120L400	20	400
S75120L415	20	415
S75120L465	20	465
S75120L500	20	500
S75120L515	20	515
S75120L565	20	565
S75120L615	20	615
S75120L625	20	625
S75120L665	20	665
S75120L715	20	715
S75120L750	20	750
S75120L770	20	770
S75120L795	20	795
S75120L805	20	805
S75120L850	20	850
S75120L915	20	915
S75120L950	20	950
S75120L995	20	995

CODICE Code	ØA (mm)	L (mm)
S75226L085	26	85
S75226L105	26	105
S75226L160	26	160
S75226L200	26	200
S75226L240	26	240
S75226L280	26	280
S75226L320	26	320
S75226L360	26	360
S75226L400	26	400
S75226L440	26	440
S75226L480	26	480
S75226L510	26	510
S75226L560	26	560
S75226L600	26	600
S75226L640	26	640
S75226L680	26	680
S75226L720	26	720
S75226L760	26	760
S75226L800	26	800
S75226L840	26	840
S75226L900	26	900
S75226L960	26	960
S75226LA00	26	1000
S75226LA16	26	1160
S75226LA24	26	1240
S75226LA38	26	1380
S75226LA44	26	1440

CODICE Code	ØA (mm)	L (mm)
S753032L100	32	100
S753032L150	32	150
S753032L200	32	200
S753032L250	32	250
S753032L280	32	280
S753032L350	32	350
S753032L410	32	410
S753032L450	32	450
S753032L500	32	500
S753032L550	32	550
S753032L600	32	600
S753032L650	32	650
S753032L700	32	700
S753032L750	32	750
S753032L800	32	800
S753032L850	32	850
S753032L900	32	900
S753032L950	32	950
S753032LA00	32	1000
S753032LA05	32	1050
S753032LA10	32	1100
S753032LA15	32	1150
S753032LA20	32	1200
S753032LA25	32	1250
S753032LA30	32	1300
S753032LA40	32	1400
S753032LA50	32	1500

Suporti Camma

Cam shaft supports

TIPO DI FRENO Brake type	QUADRO ASSALE Axle square (mm)	L (mm)	ØA (mm)	CODICE Code	FIGURA Picture (Fig.)
140X30	30	38	16	S914S1630	1
	35	34	16	S914S1626	1
	40	29	16	S914S1621	1
200X40	40	56	20	S914S2046	1
	45	52	20	S914S2042	1
	50	52	20	S914S2042	1
250X60	45	74	26	S914S2661	1
	50	72	26	S914S2659	1
	55	69	26	S914S2656	1
	60	67	26	S914S2654	1
	70	61	26	S914S2648	1
	80	56	26	S914S2643	1
300X60	50	93	26	S914S2680	1
	55	89	26	S914S2676	1
	60	89	26	S914S2676	1
	70	84	26	S914S2671	1
	80	79	26	S914S2666	1
	90	72	26	S914S2659	1
300X90	60	85	32	S914S3270	2
	70	80	32	S914S3265	2
	80	75	32	S914S3260	2
	90	70	32	S914S3255	2
	100	65	32	S914S3250	2
350X60 350X80	60	108	32	S914S3293	2
	70	103	32	S914S3288	2
	80	98	32	S914S3283	2
	90	93	32	S914S3278	2
	100	88	32	S914S3273	2
400X80	70	123	32	S914S32108	2
	80	118	32	S914S32103	2
	90	113	32	S914S3298	2
	100	108	32	S914S3293	2
	110	103	32	S914S3288	2

Fig 1

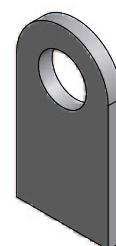
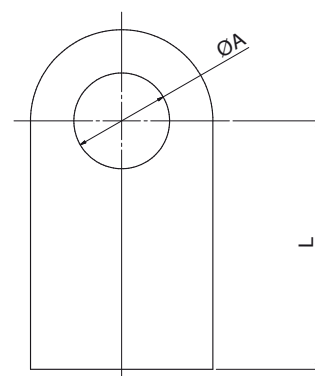
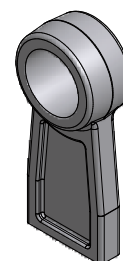
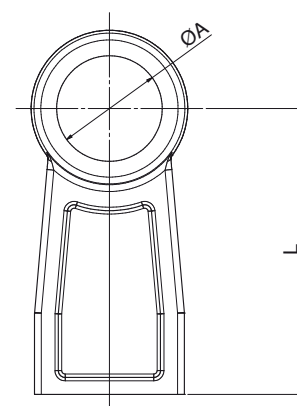


Fig 2

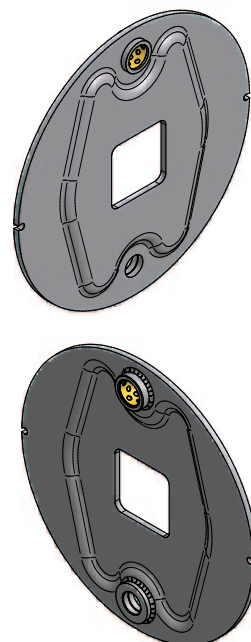
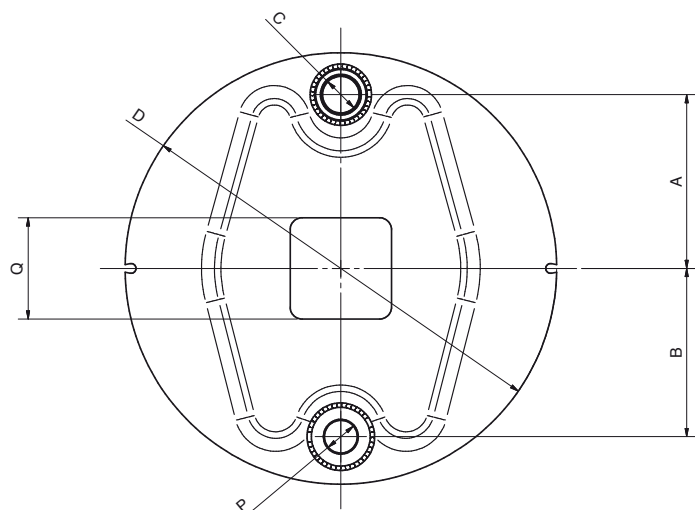


**INDIVIDUARE I RICAMBI
DALL'ASPETTO**
Identify the spare parts
by the shape



Supporti Freno

Brake supports



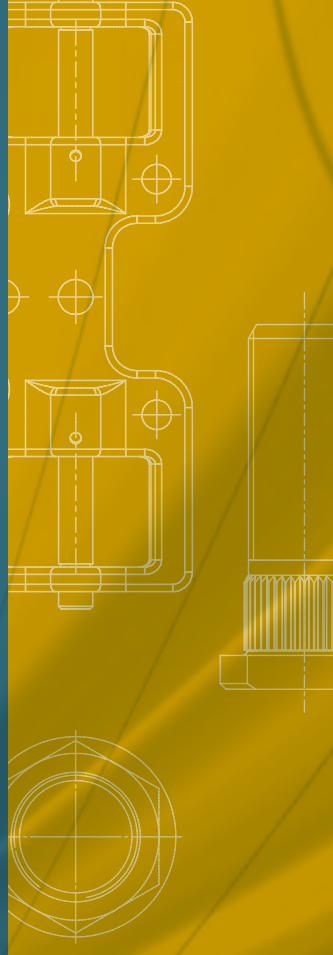
CODICE Code	D (mm)	C (mm)	P (mm)	Q (mm)	A (mm)	B (mm)	FRENO Brake
S741BG**11	197	21	13	DA 40 A 50 from 40 to 50	77	75,5	200x40
S741DA**11	247	28	15	DA 45 A 60 from 45 to 60	96,5	96,5	250x60
S741FD**11	297	28	20	DA 50 A 80 from 50 to 80	120	117	300x60
S741IA**13	297	33,5	26	DA 60 A 90 from 60 to 90	117	117	300x90
S741NZ**13	347	33,5	26	DA 60 A 100 from 60 to 100	140	143	350x60
S741NZ**13	347	33,5	26	DA 60 A 100 from 60 to 100	140	143	350x80
S741TA**13	396	33,5	30	DA 70 A 100 from 70 to 100	159,5	154,5	400x80

** INDICARE IL QUADRO RICHIESTO

** Specify the square needed

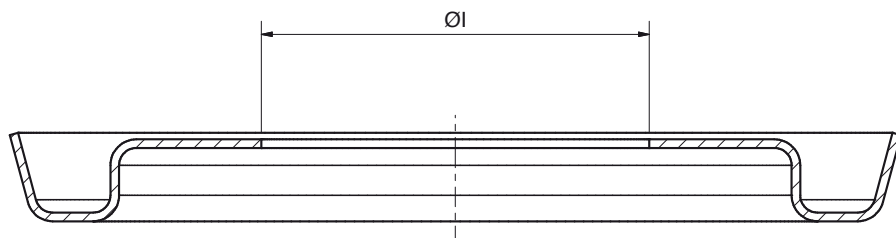
OPTIONALS

Optionals

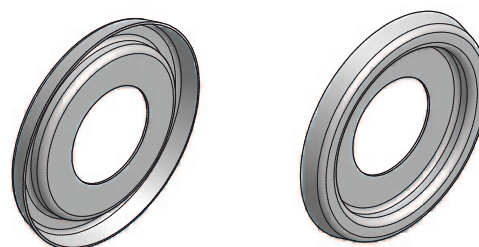


Parafanghi

Mud guards

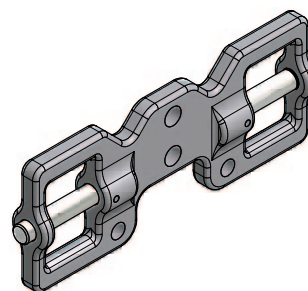
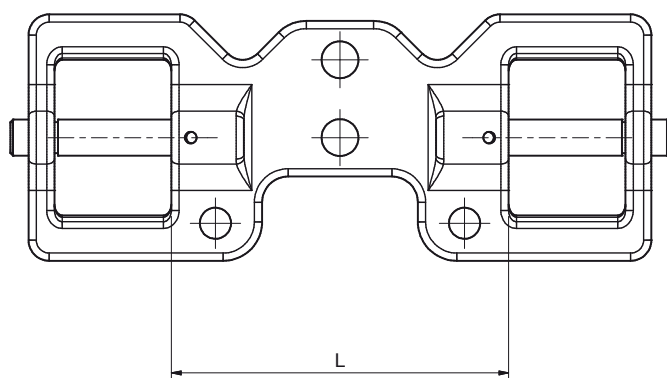


CODICE Code	ØI (mm)	CUSCINETTO Bearing
S915PP20	20	30204
S915PP25	25	30205
S915PP30	30	30206
S915PP35	35	30207
S915PP40	40	30208
S915PP45	45	30209
S915PP50	50	30210-32210
S915PP65	65	30213-32213
S915PP75	75	32215



Bilancini

Compensators



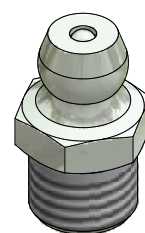
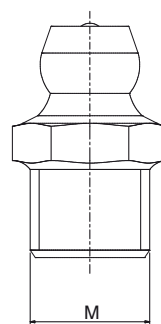
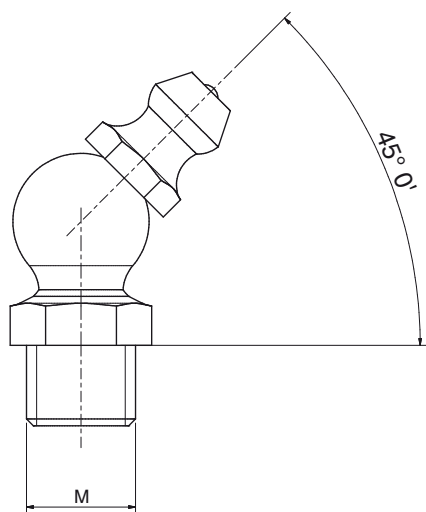
CODICE code	L (mm)
S768101	140
S768102	190



OPTIONALS
Optionals

Ingrassatori

Grease nipples



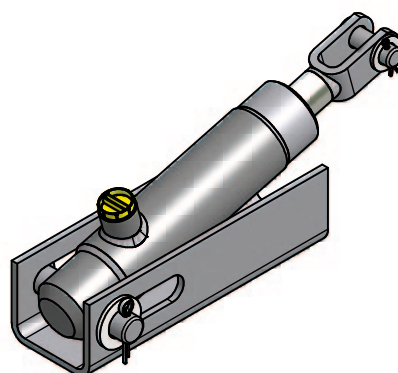
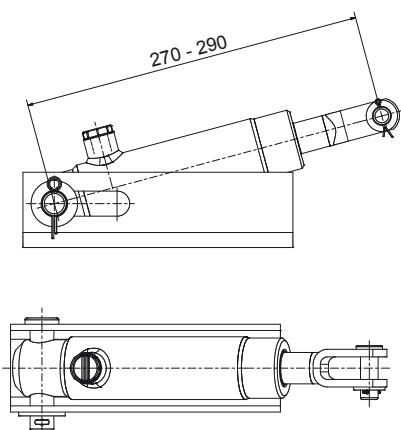
CODICE Code	M	TIPO Type
S9860611	M6x1	DIRITTO - Straight
S9860612	M6x1	45°
S98608A1	M8x1,25	DIRITTO - Straight
S98608A2	M8x1,25	45°



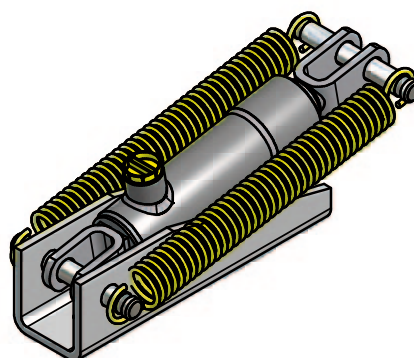
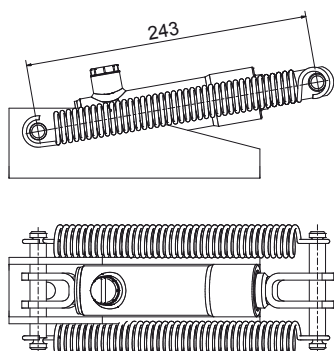
Cilindri idraulici

Hydraulic cylinder

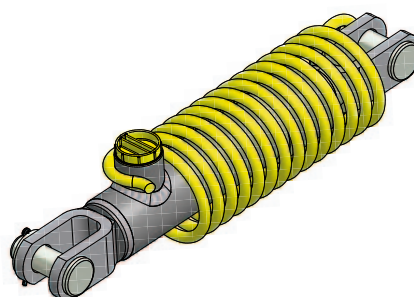
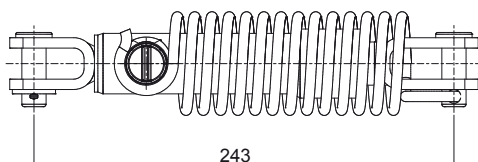
CODICE - Code:
S813107



CODICE - Code:
S813101

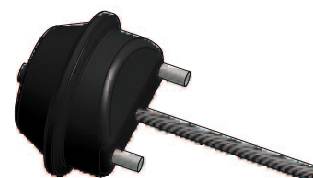
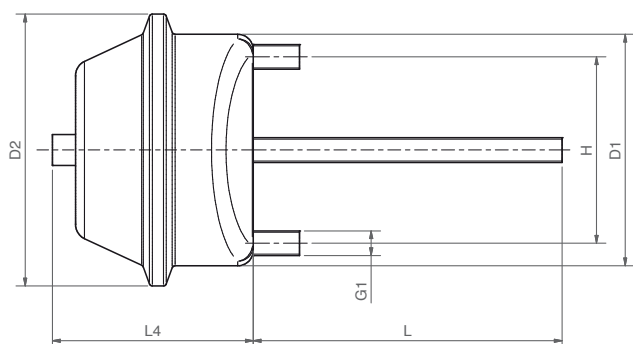


CODICE - Code:
S813104



Cilindri di frenatura pneumatici

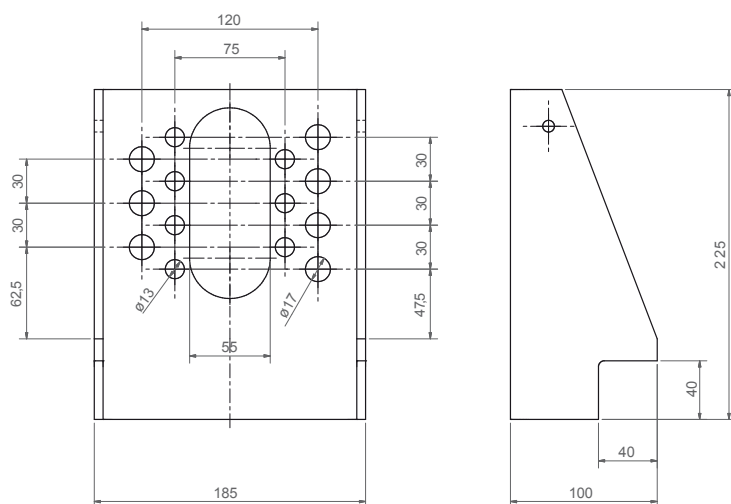
Brake chambers



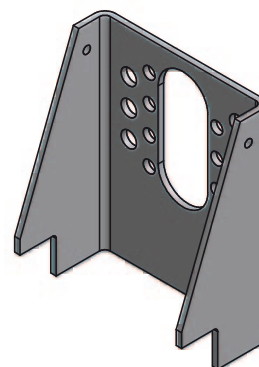
CODICE Code	DATI TECNICI - Technical data						CORSА Stroke (mm)
	D1 (mm)	D2 (mm)	G1 (mm)	H (mm)	L4 (mm)	L (mm)	
BC09	114	133	M12x1,75	76,2	110	185	48
BC12	121	145	M12x1,75	76,2	120	200	73
BC16	138	163	M12x1,75	76,2	130	200	80
BC20	150	176	M16x1,5	120,7	130	200	79
BC24	161	185	M16x1,5	120,7	130	200	78
BC30	182	208	M16x1,5	120,7	140	200	86

Piastra Brake Chamber

Brake chambers plates



CODICE - Code:
S461063013









ASSALI & SEMIASSI
AXLES & STUB AXLES

I mercati e la distribuzione _ Markets and distribution



Il mercato italiano conosce bene TVZ e la sua particolare attenzione alle esigenze e necessità in ambito commerciale. TVZ sta crescendo anche in campo internazionale, facendosi conoscere per le sue caratteristiche di versatilità e competenza; un team di persone altamente qualificato e preparato, soprattutto dal punto di vista tecnico, è in grado di valutare, consigliare e prospettare soluzioni mirate e performanti. Oltre confine l'azienda si avvale di distributori ben introdotti nei vari mercati e sempre aggiornati sull'evoluzione del settore. Crescono così anche i punti di riferimento per gli utilizzatori esteri che dispongono di interlocutori pronti a rispondere alle principali necessità di assistenza tecnica e di ricambistica.

TVZ and its special emphasis on the requirements and needs in the commercial environment are very well known in the Italian market. TVZ has also grown on an international level, where it is known for its versatility along with its expertise. A highly qualified and competent working team, above all from the technical viewpoint, is able to assess, recommend and propose targeted and effective solutions. Internationally, we work with distributors who are very well known in different markets and always up to date with the development of the sector. In this way, the benchmarks have also grown for foreign consumers who are offered the service of representatives available to respond to the main requirements of technical assistance and spare parts replacement.

PRESENTAZIONE DEL CATALOGO

CATALOGUE PRESENTATION

4

COME IDENTIFICARE UN ASSALE

HOW IDENTIFY AN AXLE

6

INDIVIDUARE I RICAMBI CONOSCENDO IL CODICE DELL'ASSALE

IDENTIFY SPARE PARTS KNOWING THE CODE OF THE AXLE

7

Terzo campo del codice: colonnette, dadi, rondelle

Third field of the code: studs, stud nuts, washers

8

Quarto campo del codice: tenute cuscinetti chiusure

Fourth field of the code: seal, bearings closures

14

Quinto campo del codice: freni

Fifth field of the code: brakes

20

Assali sterzanti

Steering axles

24

INDIVIDUARE I RICAMBI DALL'ASPETTO

IDENTIFY THE SPARE PARTS BY THE SHAPE

29

Tenute, cuscinetti

Seal, bearings

30

Chiusure mozzi

Hubs closures

34

Freni

Brakes

48

Optionals

Optionals

54

NOTE

NOTES

59

Copyright © 2012 by TVZ S.r.l. All rights reserved.

Tutti i diritti riservati. Nessuna parte di questo catalogo può essere riprodotta, memorizzata in un sistema di recupero o trasmessa in qualsiasi forma o con qualsiasi mezzo (elettronico, meccanico, fotocopie, o in altro modo) senza il preventivo consenso scritto di TVZ S.r.l.

All rights reserved. No part of this catalogue may be reproduced, stored in a retrieval system, or transmitted in any form or by any means (electronic, mechanical, photocopying, or otherwise) without the prior written permission of TVZ S.r.l.

A fronte di una continua ricerca tecnologica i dati possono cambiare senza preavviso.
Contattare il nostro ufficio commerciale per ulteriori informazioni.

*Because of continuous technology research data can change without notice.
Please, contact our sales departement for further information.*

2nd edition: January 2012
Printed in Italy
Graphics and layout design by: Art&image (BS)
Photos by: Photoline (BS)
Printed by: Novalito (BS)



ASSALI & SEMIASSI
AXLES & STUB AXLES

*L'agilità
è la nostra forza*
Agility is our strength



T.V.Z. S.r.l. Assali & Semiassi
Via Portogallo, 18
46042 Castel Goffredo (MN) ITALY

Tel +39 0376 770722
Fax +39 0376 772085
✉ info@tvzassali.it

www.tvzassali.it



ASSALI & SEMIASSI
AXLES & STUB AXLES