

# SOLIDEAL<sup>®</sup>

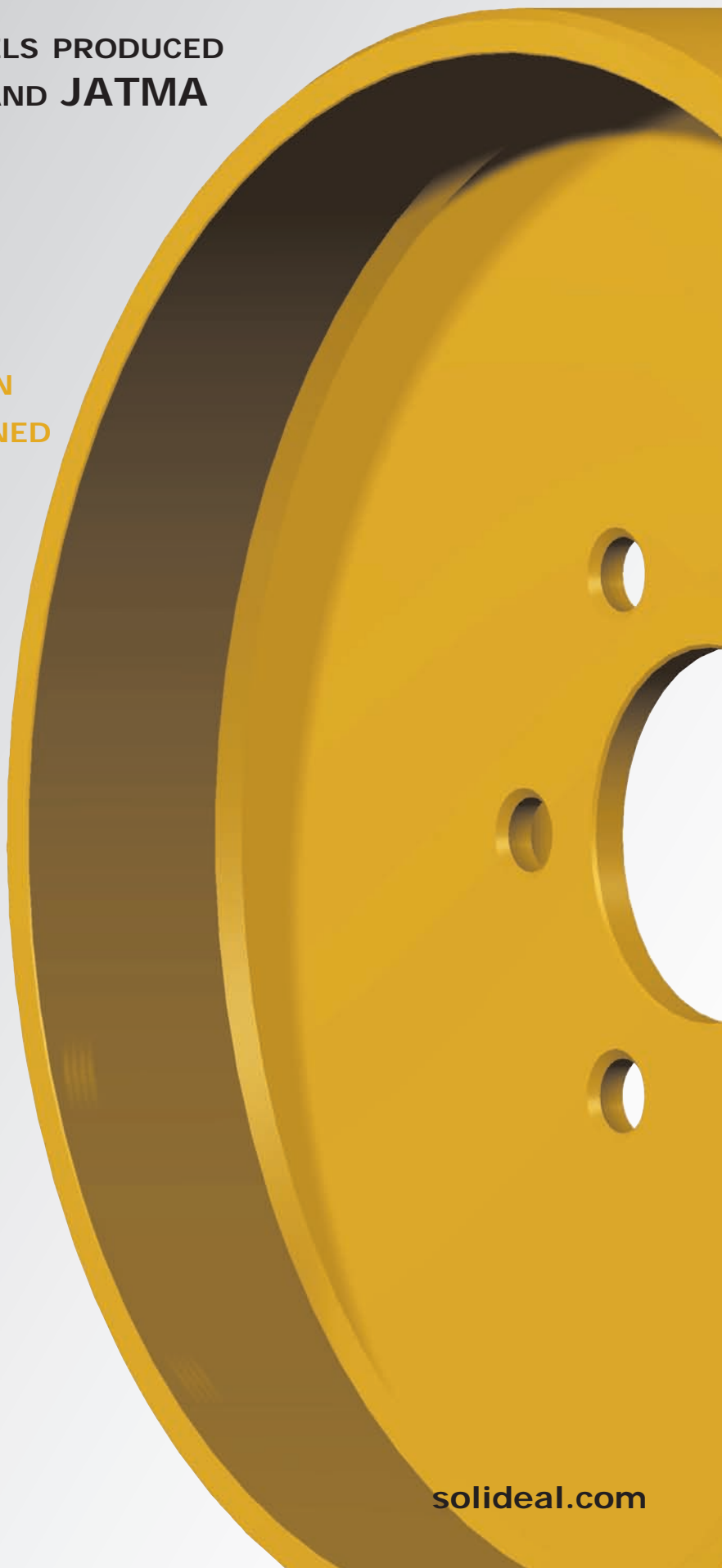
## Press On

## WHEELS & HUBS

OFF THE ROAD WHEELS PRODUCED  
TO **ETRTO, TRA AND JATMA**  
STANDARDS

**SOLIDEAL PRESS ON**  
HUBS CAN BE DESIGNED  
FOR ALL PRESS-ON  
TIRE APPLICATIONS  
AND SIZES

- Designed in cast or machined steel to provide quality performance throughout the life of the machine
- Engineered for extreme loads with low centre of gravity typical of forklifts



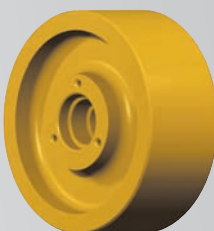
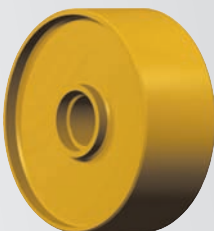
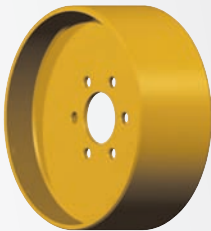
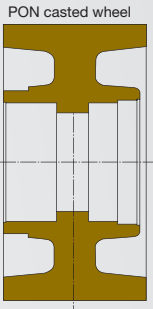
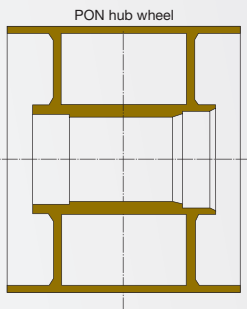
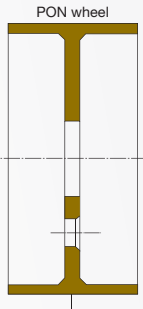
[solideal.com](http://solideal.com)



PRESS ON WHEEL & HUBS

SIZE RANGE				THICKNESS
OD	IMPERIAL METRIC	4" - 30"	140mm - 670mm	8mm - 18mm (for fabricated wheels)
WIDTH	IMPERIAL METRIC	3" - 20"	75mm - 500mm	

RIM PROFILES



SAFETY & MAINTENANCE TIPS

- Customers should always **check the load/speed indices** for tires, wheels and their components. If unsure, always check with the tire and/or wheel manufacturer for their recommendations.
- Mounting and removal of wheels and tires should only be performed by **trained personnel**.
  - Solideal wheels are designed for earthmover and industrial applications **up to 80 km/h (50 mph)**

INFORMATION IN THIS LEAFLET IS SUBJECT TO CHANGE.

SAFETY AND MAINTENANCE TIPS ARE RECOMMENDED AS A GUIDE AND SHOULD NOT BE SUBSTITUTED FOR PROFESSIONAL TRAINING. SOLIDEAL WILL NOT BE RESPONSIBLE FOR MISUSE OF WHEEL PRODUCTS.

For more information, contact your Solideal dealer or visit [solideal.com](http://solideal.com)

Distributed by:

