



SOLIDEAL®

Industrial Split

WHEELS & RIMS

OFF THE ROAD WHEELS PRODUCED
TO ETRTO, TRA AND JATMA
STANDARDS

ENGINEERED

- With safety and reliability as a priority
- With special safety hardware and markings for all wheels

FULL RANGE

- Available to fit industrial tire sizes through to 700x12

MANUFACTURED TO OEM STANDARDS



solideal.com

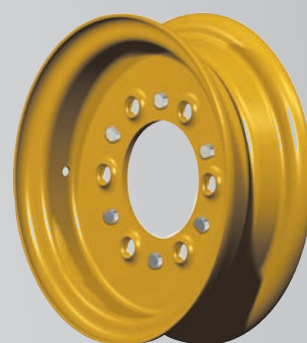
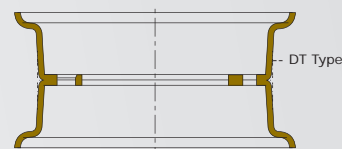


SPLIT WHEELS (Tube type)

RIM SIZE	RIM THICKNESS [mm]	TIRE SIZE		
2.50C-8		100/80-8		
3.00D-8	3.5	4.00-8	5.00-8	15x4.5-8 (SOLID)
	4.5 or 5	4.00-8	5.00-8	15x4.5-8
3.00D-8 DT	4.5	4.00-8	5.00-8	15x4.5-8
3.75I-8	3.5	4.00-8	5.00-8 (SOLID)	
	5	4.00-8	5.00-8	
4.33R-8	5	16x6-8	17x7-8	18x7-8
3.50D-9	4.5	5.00-9	16x5-9	
4.00E-9 DT	4 or 4.5 or 5	6.00-9	16x5-9	
5.00F-10	4	6.50-10 (SOLID)		
	4.5 or 6 or 7	6.50-10		
5.50F-10	5	6.50-10		
5.00S-12	6 or 7	7.00-12		
5.00S-12 DT	6	7.00-12		

DT - Flat Center

RIM PROFILE



SAFETY & MAINTENANCE TIPS

- The wheels/tires and applications indicated in this catalogue are intended as a guide only for typical applications; please contact our representatives for verification for your specific use.

- Any tire size(s) indicated in this leaflet recommended to fit a Solideal wheel size are according to ETRTO, TRA and JATMA standards only. These recommendations are not an indication of wheel/tire capacity compatibility.

- Customers should always **check the load/speed indices** for tires, wheels and their components. If unsure, always check with the tire and/or wheel manufacturer for their recommendations.

- Always ensure the wheel nuts are torqued to the correct setting, using a Torque Wrench. We recommended to check the torque setting after the first 50 km.

- The incorrect use/fitting of components on split wheels can result in wheel failure. Mounting and removal of wheels and tires should only be performed by **trained personnel**.

- Always ensure that the tires are **fully deflated** (by removing the valve core completely) before removing the wheel or its components from a vehicle, especially for industrial split wheels. Avoid standing in front of industrial split wheels during assembly: loose components which might spring off if damaged.

- Prior to inflation and deflation, the components of split wheel should always be carefully checked for correct fitment and positioning. Never try to place/remove components with the use of

force. **Deformed, corroded or damaged components must be replaced.** In case of incorrect fitment, demount the components and restart the mounting procedure.

- Solideal wheels are designed for earthmover and industrial applications **up to 80 km/h (50mph)**.

- Always check all bolts and nuts for damage on the thread before assembling the new wheel.

- Change to a locking wheel if the recommended tire pressure is greater than the split wheel guaranteed pressure. **Never exceed the air pressure guaranteed for split wheels** (note: standards can vary from one wheel to the other).

- The inflation/deflation of industrial split wheels must only be carried out by fully trained and authorized personnel, who should follow exactly the instructions provided by the wheel and tire manufacturers as well as government safety regulations. Safety cages and bars must be used in all applications in conjunction with remote inflation gauges.

- All types of bolts must always be fitted to the outside, not towards the machine side. Hexagonal bolts can only be used for solid tires, not for pneumatics.

Note - we recommend that inflation of split wheels should not exceed 2.0 Bar (28.6 psi) until it has been fitted to its axle hub and secured accordingly.

INFORMATION IN THIS LEAFLET IS SUBJECT TO CHANGE.

SAFETY AND MAINTENANCE TIPS ARE RECOMMENDED AS A GUIDE AND SHOULD NOT BE SUBSTITUTED FOR PROFESSIONAL TRAINING. SOLIDEAL WILL NOT BE RESPONSIBLE FOR MISUSE OF WHEEL PRODUCTS.

Distributed by:



SOLIDEAL®

For more information, contact your Solideal dealer or visit solideal.com